

49 Birkley Road MANLY, NSW

2 

1 

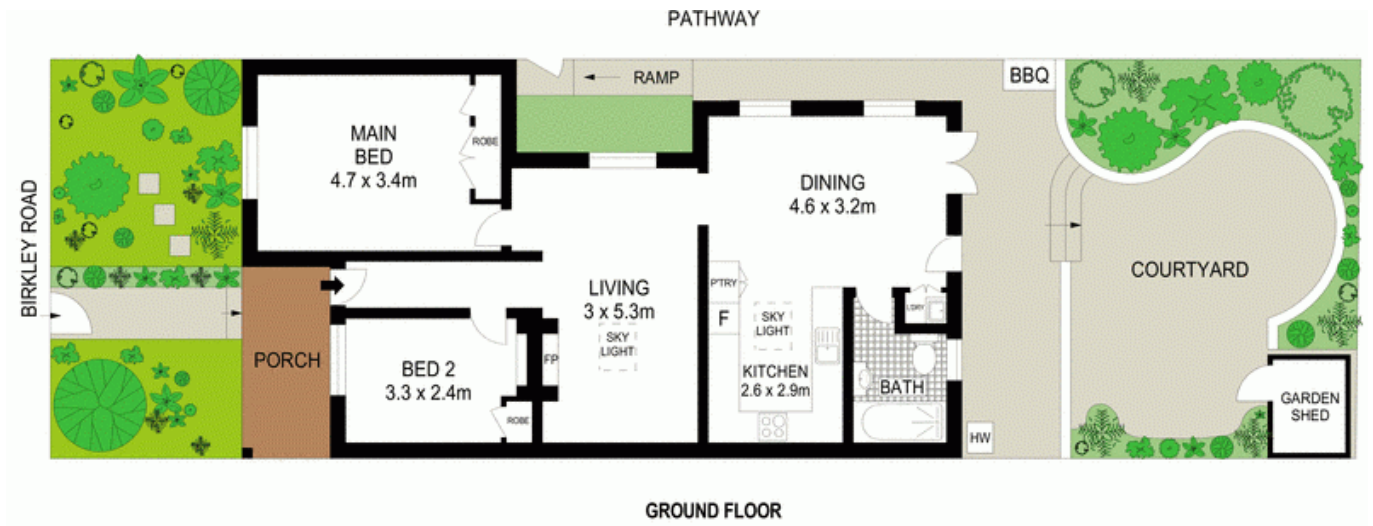
Pristine character semi on easycare sunlit gardens

Graced with character and styled in tasteful modern themes, this circa early 1900's weatherboard semi provides a haven of elegance, style and privacy. Set on tranquil easycare gardens with a sunlit courtyard, it is only a few minutes stroll to the beach.

- Adorable weatherboard facade with bullnose front verandah
- Exceptionally bright, soaring ceilings, numerous skylights
- Formal living space warmed by an ornate cast iron fireplace
- Dining and casual living space open to the rear courtgarden
- Stylish country-style kitchen, gas cooktops and dishwasher
- Double bedrooms with built-ins, main with fan, modern bathroom
- Private sun soaked courtyard framed by palms and frangipani
- Built-in barbecue with town gas, large garden shed

Stone Manly

02 8962 2200



Scale in metres. Indicative only. Dimensions are approximate. All information contained herein is gathered from sources we believe to be reliable. However we cannot guarantee its accuracy and interested persons should rely on their own enquiries.



49 Birkley Road, Manly

McGrath