

8/1 Cerretti Crescent MANLY, NSW

3 

3 

2 

### World class lifestyle in exclusive coastal enclave

This home makes a lasting impression with its flowing proportions, premium appointments and perfect north aspect. Boasting a corner position within the exclusive 'St Patrick's Estate', it's moments to great cafes, scenic walks and bus/ferry transport.

- Brilliantly designed and featuring open plan living/dining
- Light drenched interiors with year-round internal courtyard
- Lush estate views from the sheltered entertaining terrace
- Ultra-contemporary CaesarStone kitchen, Miele gas appliances
- Home office or study plus guest powder room on main floor
- Spacious master offers walk through robes and deluxe ensuite
- Bedrooms include built-ins, sleek stone finished bathrooms
- Ducted air conditioning and heating plus back-to-base alarm

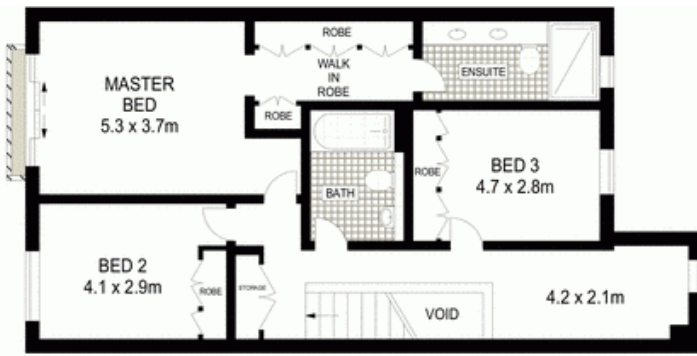
Price:

Price guide over \$2,000,000

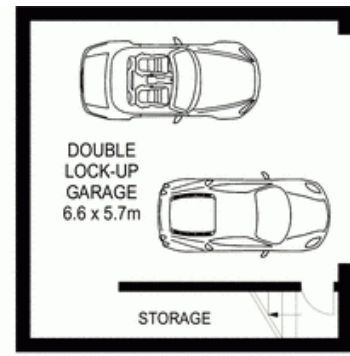


**Candice Cattell**

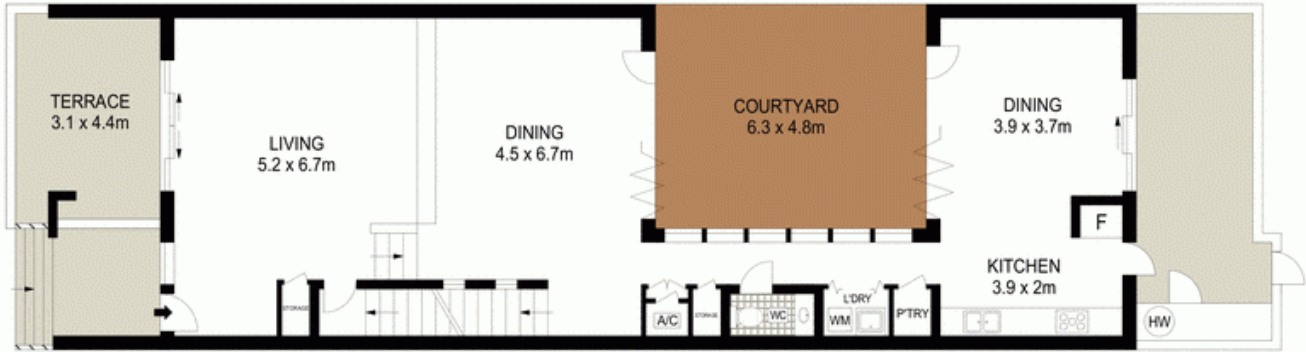
0417 311 777



FIRST FLOOR



BASEMENT



GROUND FLOOR

0 1 2 3 4 5

Scale in metres. Indicative only. Dimensions are approximate. All information contained herein is gathered from sources we believe to be reliable. However we cannot guarantee its accuracy and interested persons should rely on their own enquiries.

INT : 237m<sup>2</sup>  
EXT : 65m<sup>2</sup>



8/1 Cerretti Crescent, Manly

**McGrath**