



2/13 Fairway Close MANLY VALE, NSW



Quiet courtyard garden apartment in pet-friendly complex

Located in a whisper quiet cul-de-sac on the fringes of Manly Golf Course, neighbouring reserves and lagoon, this modernised courtyard apartment presents a fantastic opportunity for first home buyers, young families, downsizers and investors.

- Supremely private and contemporary apartment, bathed in northerly sunlight.
- Generously proportioned interiors open to an outdoor entertaining courtyard and garden.
- North facing, ground floor position with private access.
- Fully renovated with gourmet stone bench top and stainless steel Bosch appliances.
- Well-presented full brick building in pet-friendly complex.
- Two double bedrooms with timber floorboards throughout.
- Open plan lounge and dining area opening to outdoor area.
- Large carport, close to garden entrance and built-in laundry.

Price: over \$600,000



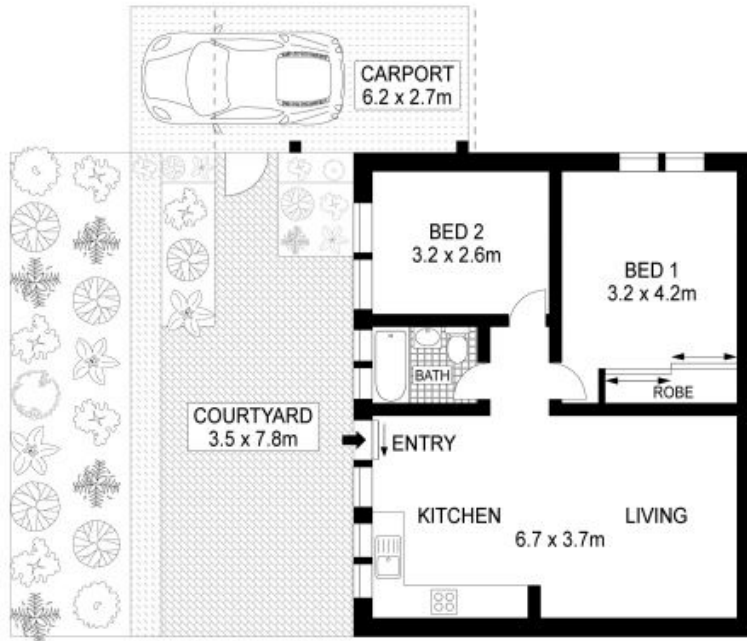
Tim Mumford

0421 942 693



Tim Mumford

0421 942 693



GROUND LEVEL



PLANS SHOWN ONLY INDICATIVE OF LAYOUT. DIMENSIONS ARE APPROXIMATE.



2/13 FAIRWAY CLOSE, MANLY VALE

