



8/22 Queenscliff Road QUEENSCLIFF, NSW 2 2

### Contemporary living on Queenscliff Headland

Stylishly renovated to deliver luxury contemporary living at its finest, this chic residence features a striking contemporary balance of streamlined space and premium appointments, complemented with a subtle touch of The Hamptons. The property's spacious high ceilings and clever layout define a spacious, easy-living ambience, plus direct access to Queenscliff Beach and close to Manly ferries.

- New kitchen, bathroom, ensuite, flooring and designer light fittings.
- Convenient study nook and stylish wood panelled feature walls.
- Kitchen features stone benchtops, sleek tile splashbacks and European appliances.
- Master bedroom boasts spacious walk-in robe and ultra-modern ensuite.
- Balcony enjoys abundant northern light, plus internal laundry facility.
- Intercom access with single car space and generous guest car parking.

Strata rates - \$944.60pq  
 Council rates \$289.00pq  
 Water rates \$170.00pq

**Price:** over \$899,000

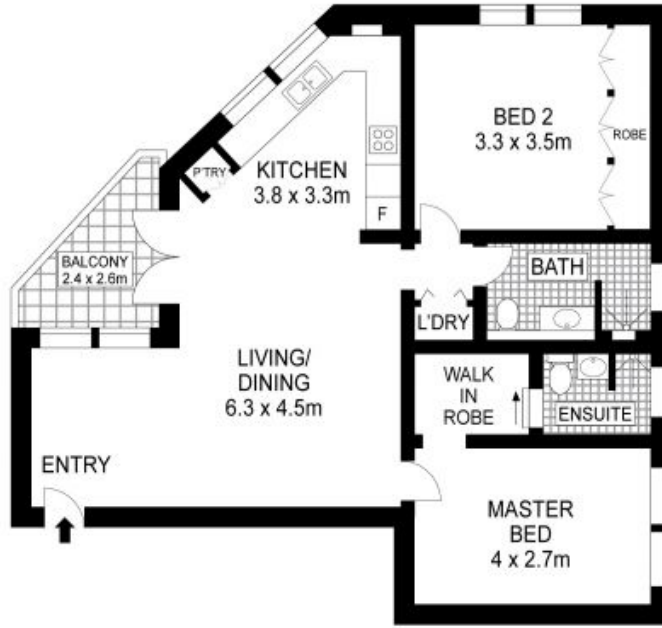


**Adam Moore**

0428 319 096



GROUND LEVEL



SECOND LEVEL



PLANS SHOWN ONLY INDICATIVE OF LAYOUT. DIMENSIONS ARE APPROXIMATE.



8/22 QUEENSCLIFF ROAD, QUEENSCLIFF

