

29 Adelaide Street BALGOWLAH HEIGHTS, NSW

4

3

2

### Sublime masterpiece with panoramic views

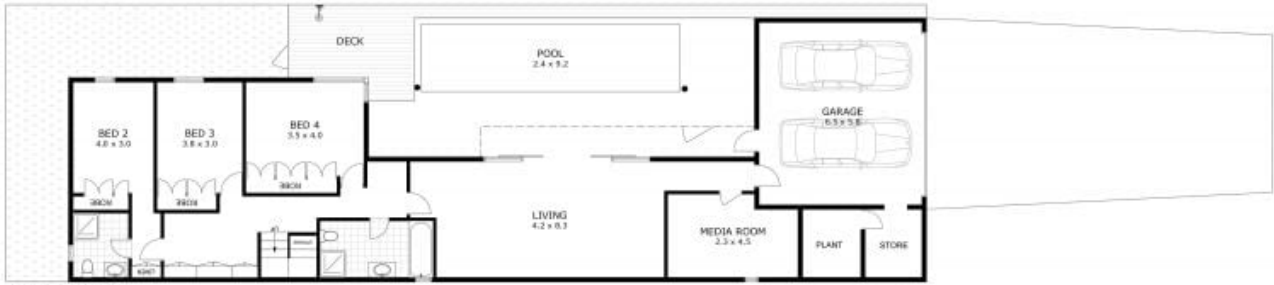
Beyond the exceptional facade lies a spectacular brand new home boasting three levels with endless blue-sky views. Architecturally designed to enhance light and space with remarkable in/outdoor flow creating the ultimate entertainer exuding luxury bespoke finishes.

Price:

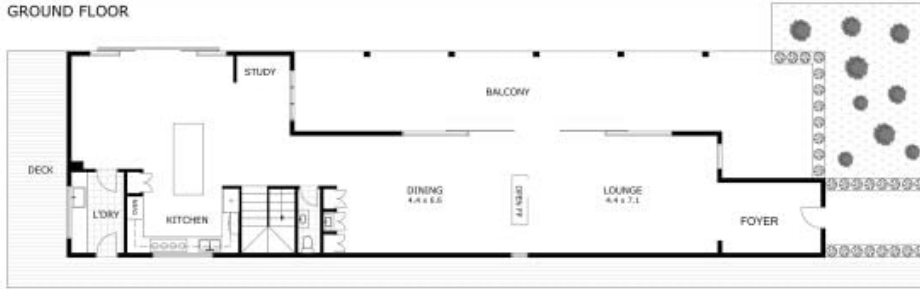
Over \$3,100,000

**Stone Manly**

02 8962 2200



GROUND FLOOR



LEVEL 1



LEVEL 2



Scale in metres. Indicative only. Dimensions are approximate. All information contained herein is gathered from sources we believe to be reliable. However we cannot guarantee its accuracy and interested parties should rely on their own enquiries.

Total	- 405 m <sup>2</sup>
Ground floor	- 154 m <sup>2</sup>
Level 1	- 150 m <sup>2</sup>
Level 2	- 64 m <sup>2</sup>
Garage	- 37 m <sup>2</sup>



## 29 Adelaide Street, Balgowlah Heights

