



436 Pittwater Road NORTH MANLY, NSW

4 2 2

Immaculate retreat on enchanting child-safe gardens

Discretely hidden from the street behind a high privacy fence, this immaculate single level residence provides a tranquil family haven of elegance and style. Placed on a wide fronted 657sqm with enclosed near level lawns and exquisitely landscaped gardens, it is located directly opposite Nolans Reserve and only moments from beaches and Warringah Mall.

Price:

Contact Agent



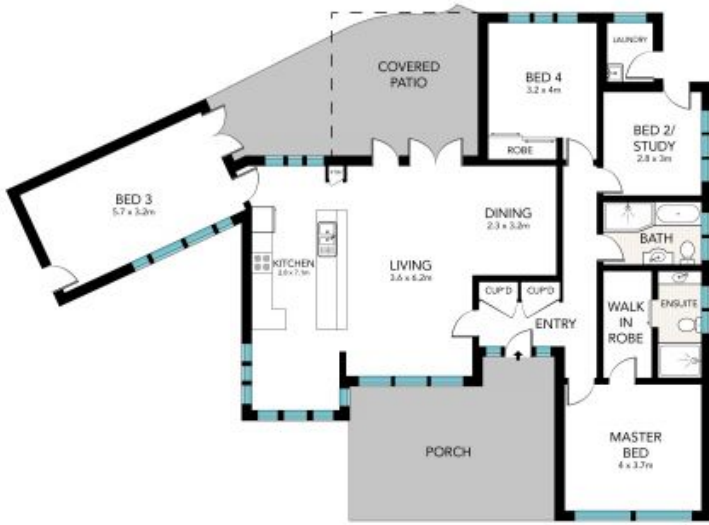
Tim Mumford

0421 942 693



Tim Mumford

0421 942 693



GROUND FLOOR



SITE PLAN (NOT TO SCALE)

0 1 2 3 4 5 SCALE (METRES)

All the information provided has been collected from reliable sources but cannot be guaranteed for accuracy. Interested persons should rely on their own enquiries. All dimensions are approximate and indicative only.

436 PITTWATER ROAD, NORTH MANLY



STONE