

7/38 The Crescent FAIRLIGHT, NSW



### Exceptional one-bedder in prime harbourside setting

Showcasing bright open interiors, comfortably modern finishes and two wide sunlit balconies, this impressive apartment ticks just about every box. Revealing harbour scenes toward Manly Wharf from an elevated top floor setting, its prestigious address is footsteps from the harbour foreshore and a few minutes stroll to Manly's vibrant lifestyle hub.

Price:

Over \$690,000



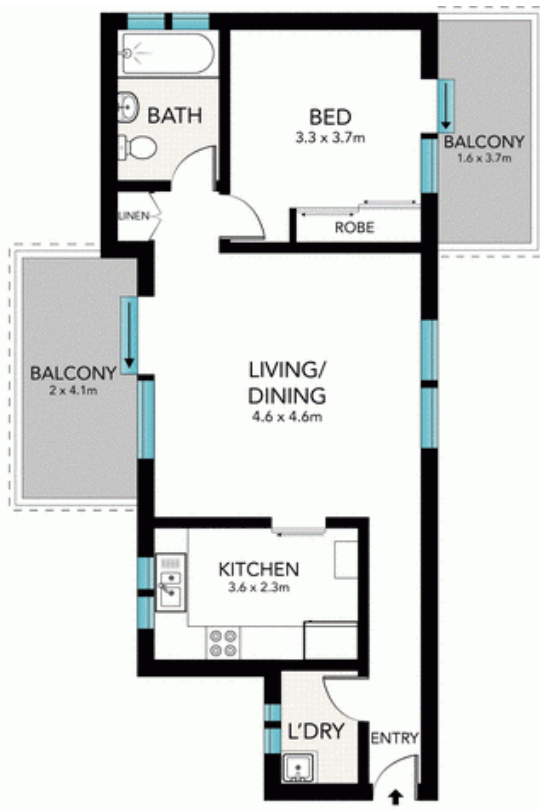
**Adam Moore**

0428 319 096



**Adam Moore**

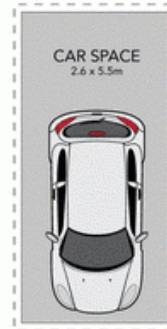
0428 319 096



SECOND FLOOR



GROUND FLOOR



GROUND FLOOR



SCALE (METRES)

All the information provided has been collected from reliable sources but cannot be guaranteed for accuracy. Interested persons should rely on their own enquiries. All dimensions are approximate and indicative only.



7/38 THE CRESCENT, FAIRLIGHT

