

3 Birkley Road MANLY, NSW

4 2 1

Majestic Federation terrace of house-like proportions

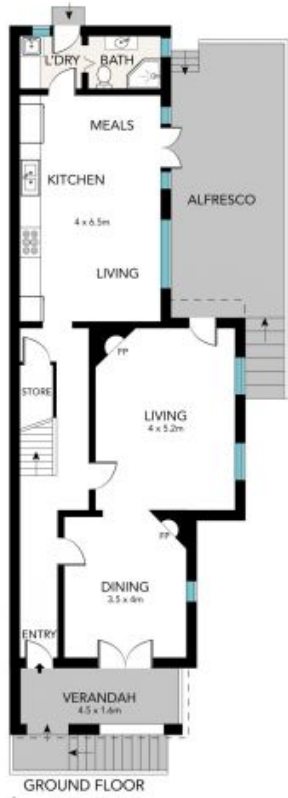
Fusing exquisite period detailing with sumptuous modern enhancements, the c1912 Eastview provides an enchanting family retreat. Placed on 290sqm of established landscaped child-friendly gardens, it is only a short stroll to Manlys lifestyle hub.

Price: \$2,715,000



Adam Moore

0428 319 096



GROUND FLOOR



FIRST FLOOR



SITE PLAN



All the information provided has been collected from reliable sources but cannot be guaranteed for accuracy. Interested persons should rely on their own enquiries. All dimensions are approximate and indicative only.

3 BIRKLEY ROAD, MANLY