



location shot

12/16 Campbell Parade Manly Vale, NSW

2 1 1

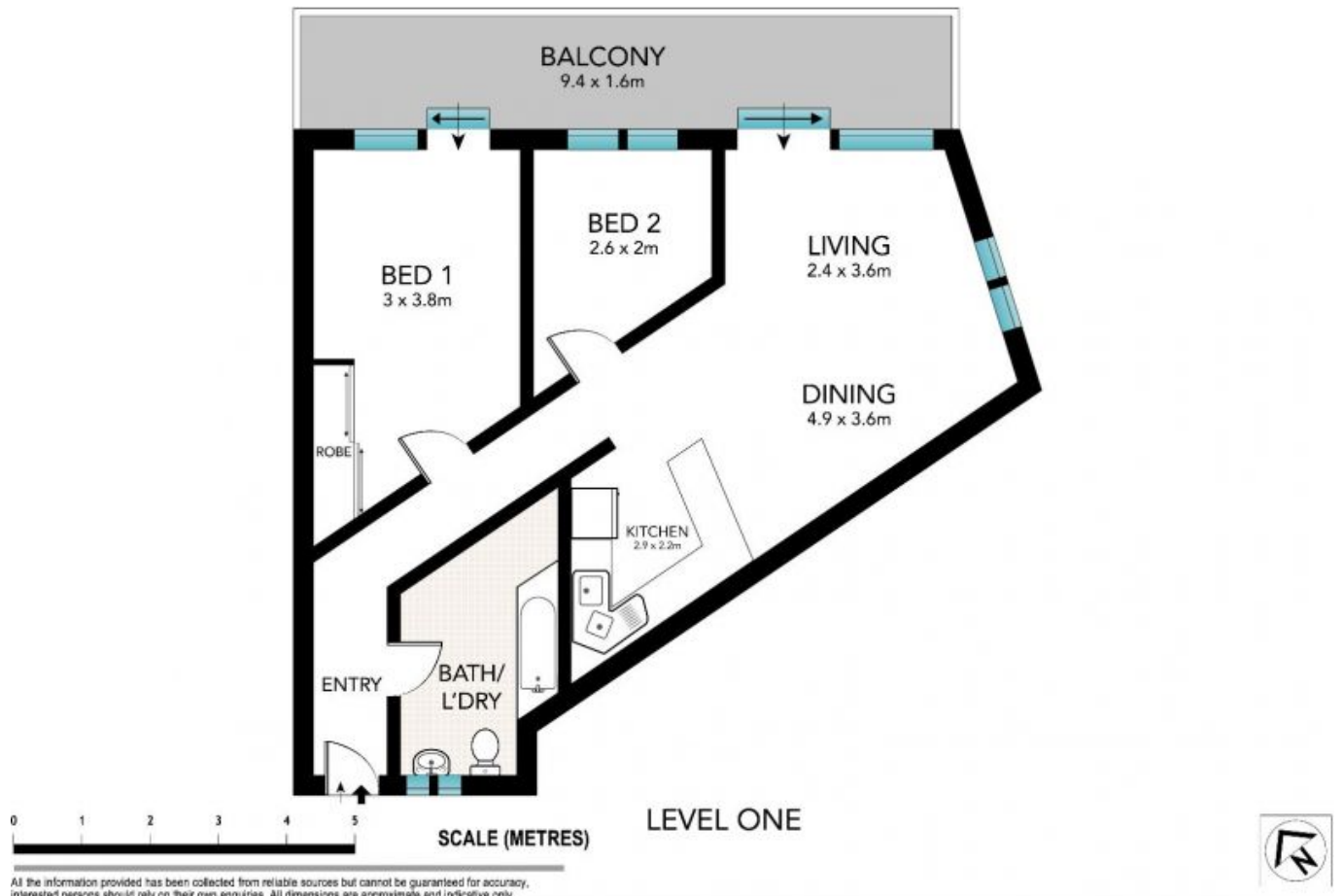
**North facing apartment in spectacular golf course location**

An enchanting lifestyle beckons from this sleek and stylish apartment immersed in the picturesque northerly landscape of the adjoining Warringah Golf Course. Completely transformed with designer finishes throughout its bright and breezy interiors, it opens to an oversized sun soaked entertainers' balcony with grandstand views over the 17th green.

**Price:** \$695,000  
**Council Rates:** \$360.00 p/q  
**Water Rates:** \$177.00 p/q  
**Strata Rates:** \$354.00 p/q



**Tim Mumford**  
 0421 942 693



All the information provided has been collected from reliable sources but cannot be guaranteed for accuracy, interested persons should rely on their own enquiries. All dimensions are approximate and indicative only.

12/16 CAMPBELL PARADE, MANLY VALE