



4G/13 East Esplanade Manly, NSW



### Pad with potential in popular Manly

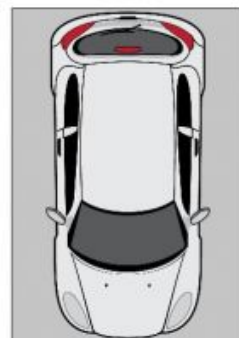
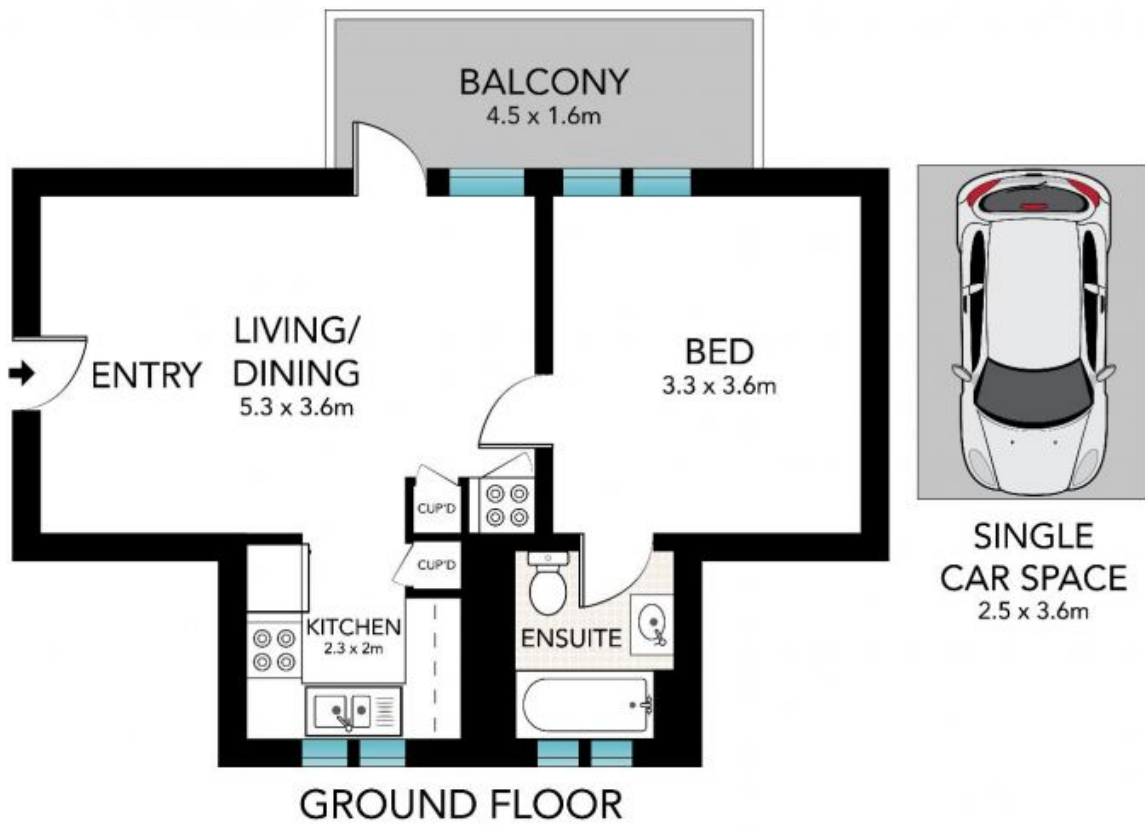
Situated within the popular 'Ambassador' residential block, this secure ground floor apartment offers stunning views across beautiful Manly Cove. Seconds from Manly Wharf and buses to the city, lifestyle and fun is the focus of this prime location.

Price: \$780,000



**Tim Mumford**

0421 942 693



**SINGLE CAR SPACE**  
2.5 x 3.6m



All the information provided has been collected from reliable sources but cannot be guaranteed for accuracy, interested persons should rely on their own enquiries. All dimensions are approximate and indicative only.



**4G/13 EAST ESPLANADE, MANLY**