



3/40 East Esplanade Manly, NSW

3

2

A central setting and harbour views

Enjoying a prime position opposite Manly Cove Beach in Manly's vibrant heart, this updated apartment gazes directly onto the shimmering harbour. The residence is footsteps to cafes, nightlife, fine dining and the ferry wharf for an easy CBD commute.

Price: \$1,700,000
Council Rates: \$360.00 p/q
Water Rates: \$170.00 p/q
Strata Rates: \$1,038.00 p/q



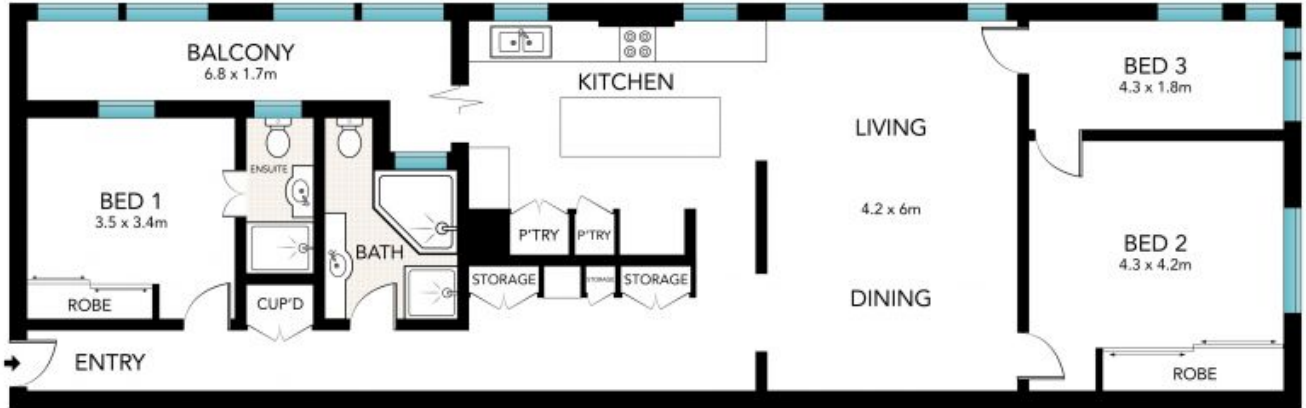
Tim Mumford

0421 942 693



Candice Cattell

0417 311 777



LEVEL ONE



All the information provided has been collected from reliable sources but cannot be guaranteed for accuracy. Interested persons should rely on their own enquiries. All dimensions are approximate and indicative only.



3/40 East Esplanade, Manly