

52 Francis Street MANLY, NSW



CLASSIC FAMILY HOME

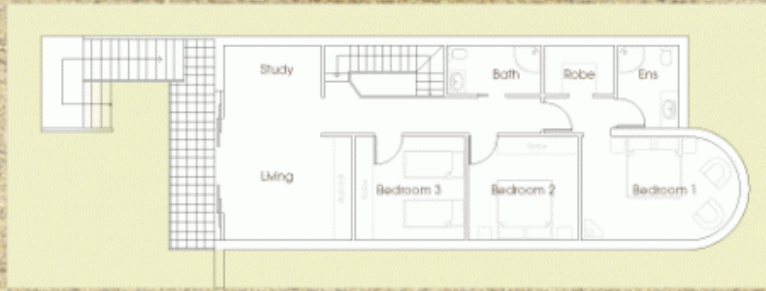
This substantial double brick family home combines the charm of a gracious dwelling from yesteryear, with the sophistication of modern living. Built in the 1930's as a duplex. Recently 'Bloomfield' has been lovingly restored and converted into a single residence of amazing proportions. ;Bloomfield? offers significant street appeal, with its P&O style facade.

Stone Real Estate

02 9949 2822

Seaforth

52 Francis Street Manly



1st Floor



Ground Floor



Artist Impression



Lower Ground Floor