

Unit 4/477 Sydney Road BALGOWLAH, NSW

2 

1 

1 

SOLD - 'ARCHDALE' A TIMELESS CLASSIC

Built in the late 1940's with bold character and classic features.

Stone Real Estate

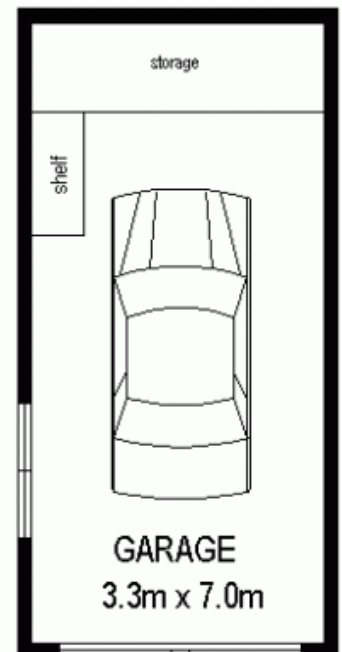
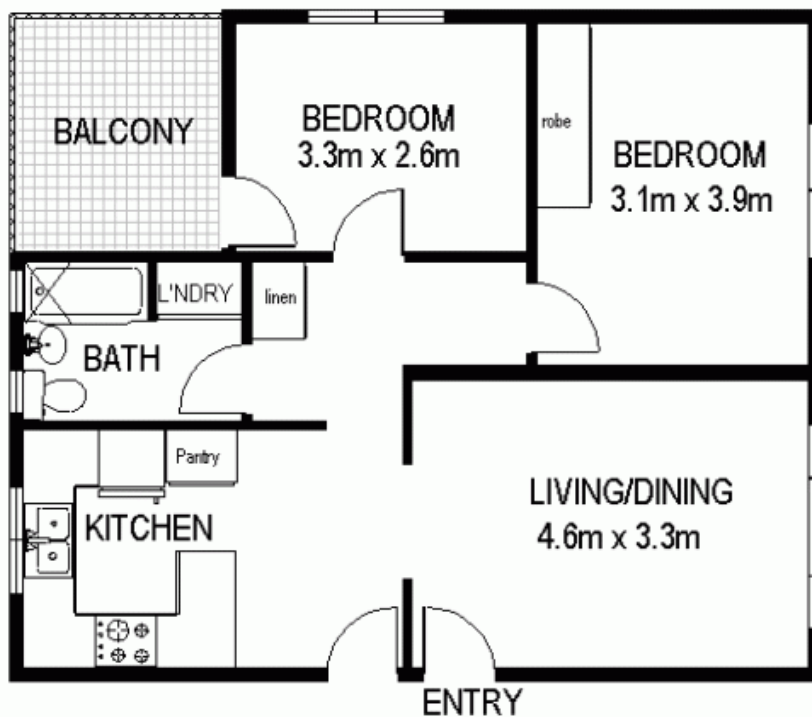
02 9949 2822

Seaforth

4/477 Sydney Road, Balgowlah



Approx 89 sq.m (incl. balcony & garage)



Back Entrance ← → **Front Entrance**