

411 Sydney Road BALGOWLAH, NSW



SOLD - PRIME DEVELOPMENT OPPORTUNITY - CORNER LANDMARK POSITION

- Perfect level 674m²; block approx with enormous potential.
- Zoning 1:300m² development (STCA) for sub-division.
- Suit many professional uses, ideal investment with the potential to re-develop now or later.
- Exceptional opportunity to secure Balgowlah's most prominent corner position located directly opposite the new Totem Shopping Centre.
- Be quick, opportunities like this WILL NOT LAST!!

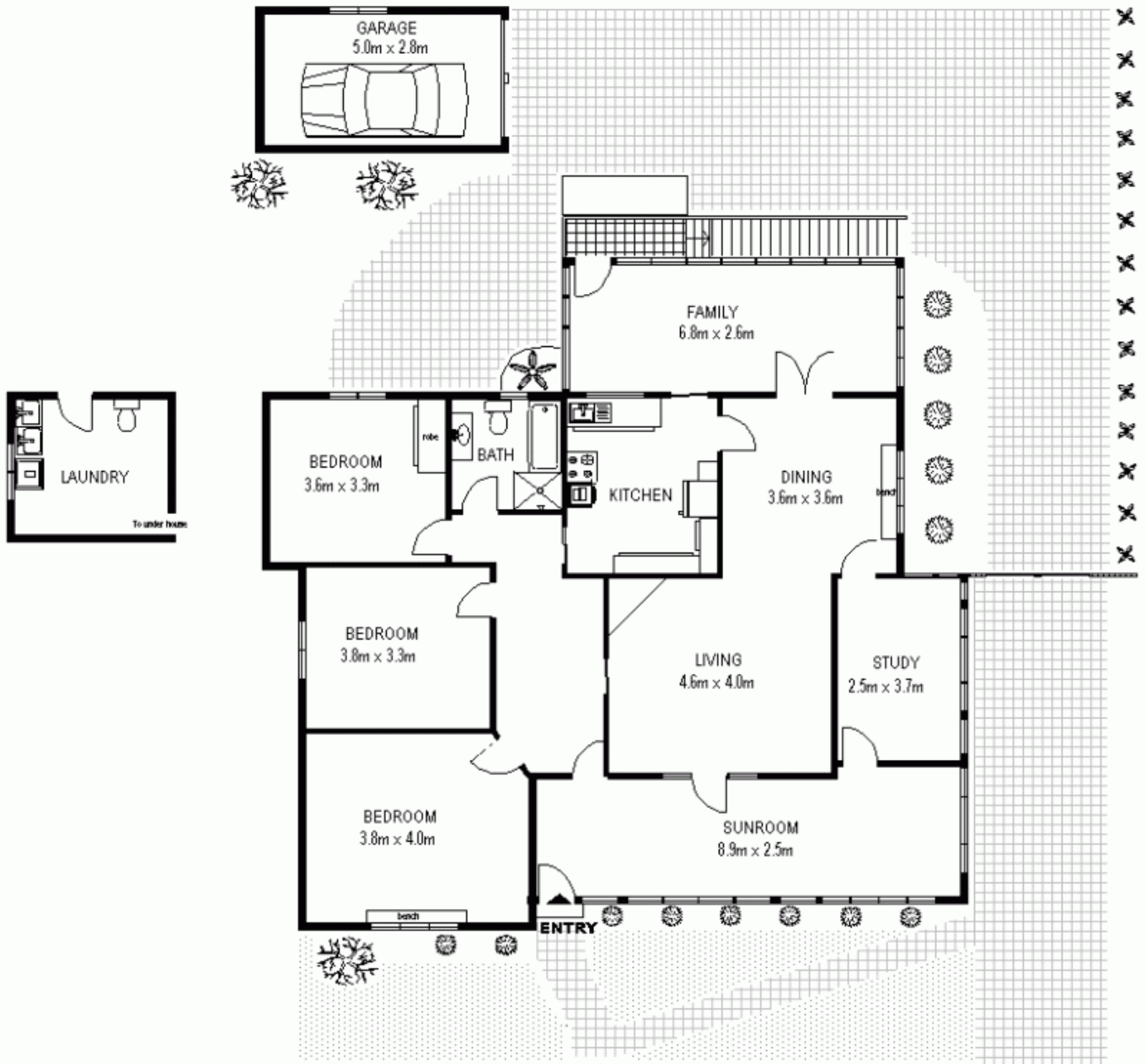
Stone Real Estate

02 9949 2822
Seaforth

411 Sydney Road, Balgowlah

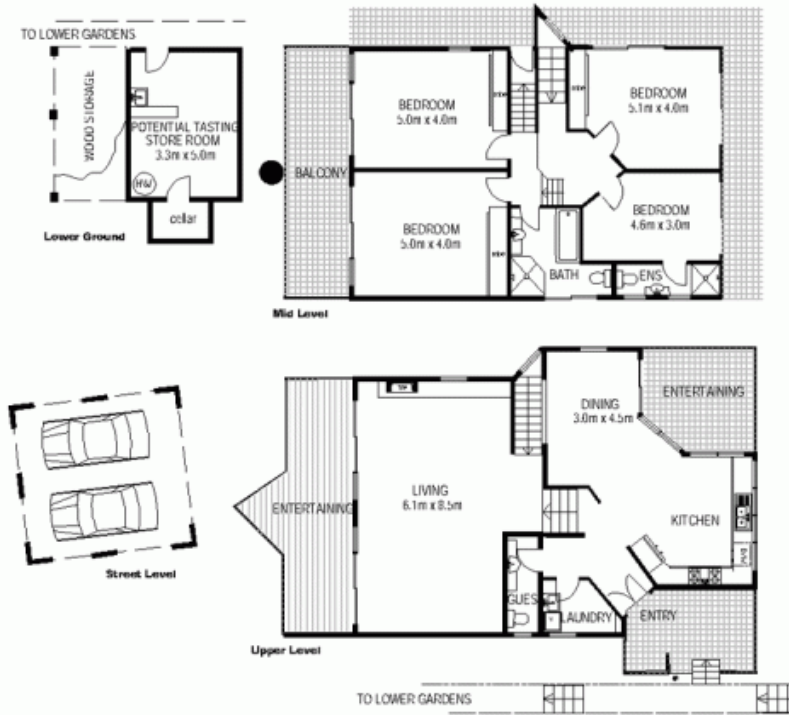


Internal area including garage approx. 187 sq mtrs



FLOORPLANNERS
[Redacted]
[Redacted]

39 Gordon Street, Clontarf



FLOORPLANNERS Mob 0419 494 976
This floor plan is a guide for potential purchasers only and should not be relied upon for specific detail. No liability will be accepted.