

9 Mulgowrie Crescent BALGOWLAH HEIGHTS, NSW



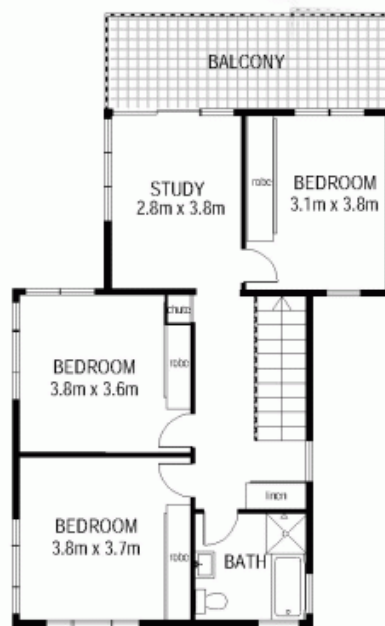
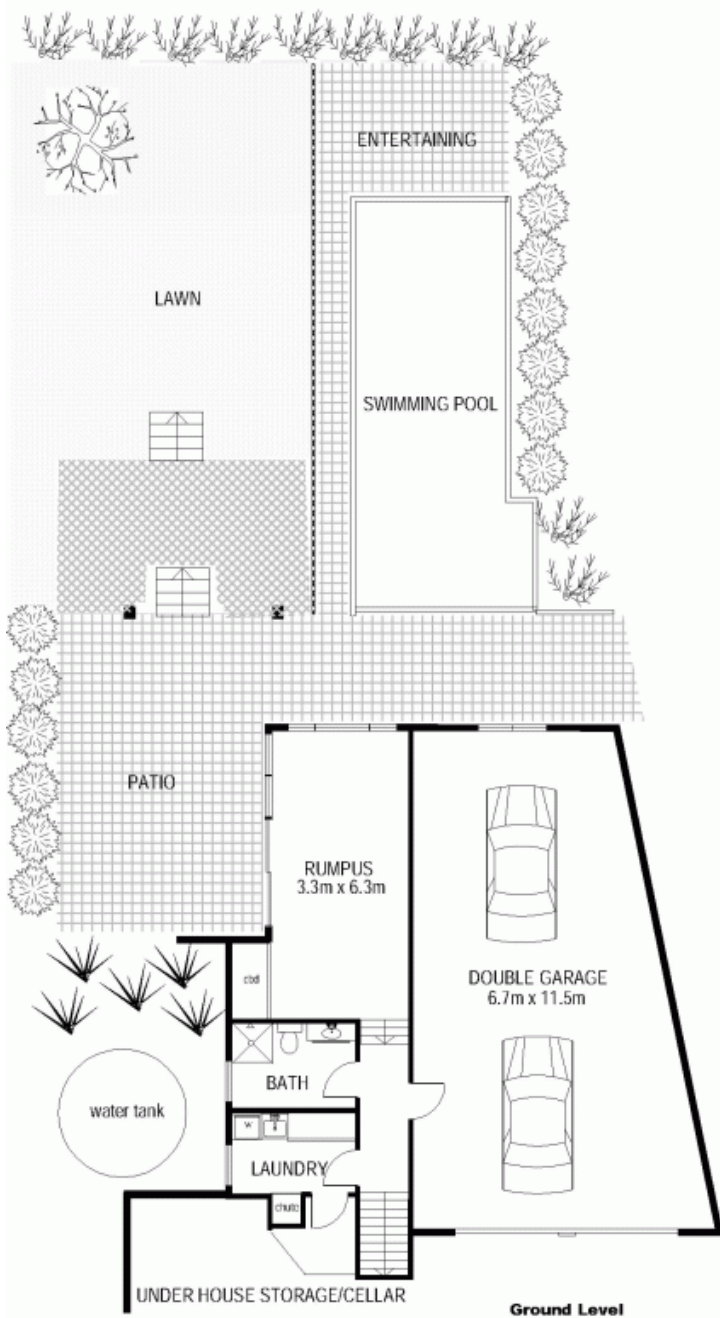
IMPRESSIVE CONTEMPORARY RESIDENCE

- . Generous proportions & designer finishes throughout.
- . Dress circle position in quiet location & adjacent reserve.
- . Superbly presented & bathed in northerly sunshine with harbour views.
- . Sensational indoor & outdoor entertaining with I.G. Pool & home office on a 626m2 block
- . Flexible floor plan & home office to complete the package.

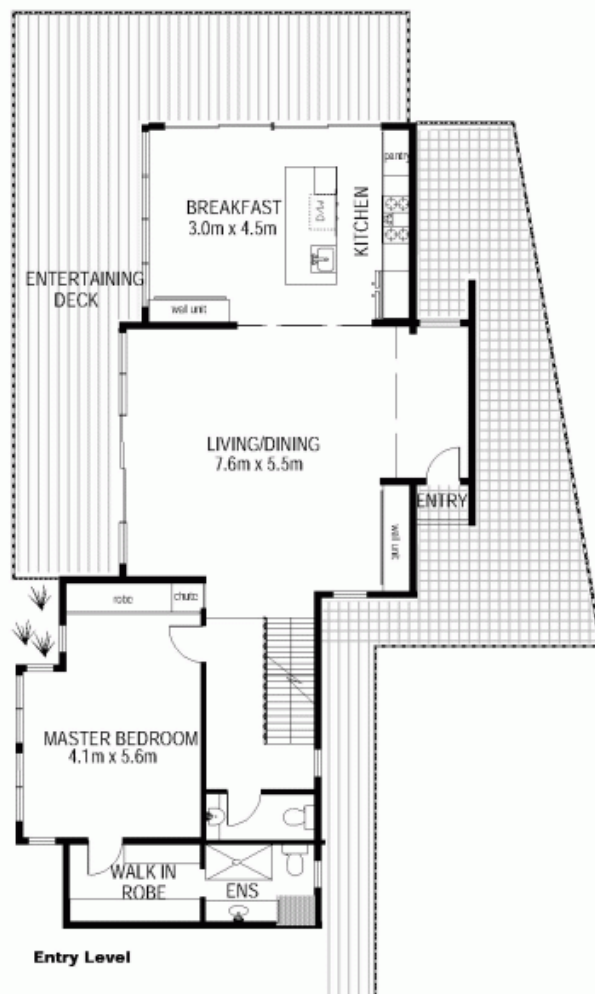
Price: Bidding In Excess Of Early \$2 Million

Stone Real Estate

02 9949 2822
Seaforth



Upper Level



Entry Level

FLOORPLANNERS Mob 0419 494 976
 This floorplan serves as a guide for promotional purposes only
 and should not be relied upon for any specific detail. No liability will be accepted.