

23 Bligh Crescent SEAFORTH, NSW



Chic waterfront masterpiece, incredible privacy

Showcasing remarkable 180 degree views directly across Middle Harbour, this luxurious absolute waterfront masterpiece boasts deluxe contemporary appointments throughout. It offers incredible privacy while also being close to village shops and fine schools.

- Extended out to maximise view, direct waterfront access
- Substantial open interiors flow outside through bi-folds
- Entertainment deck and sparkling in-ground swimming pool
- Smeg/Bosch gas fitted island kitchen, Carrara marble tops
- Well proportioned upper bedrooms with plantation shutters
- King sized master suite has walk through and own balcony
- Full main designer bathroom, separate bath and shower
- Merbau floorboards, video intercom entry, alarm security

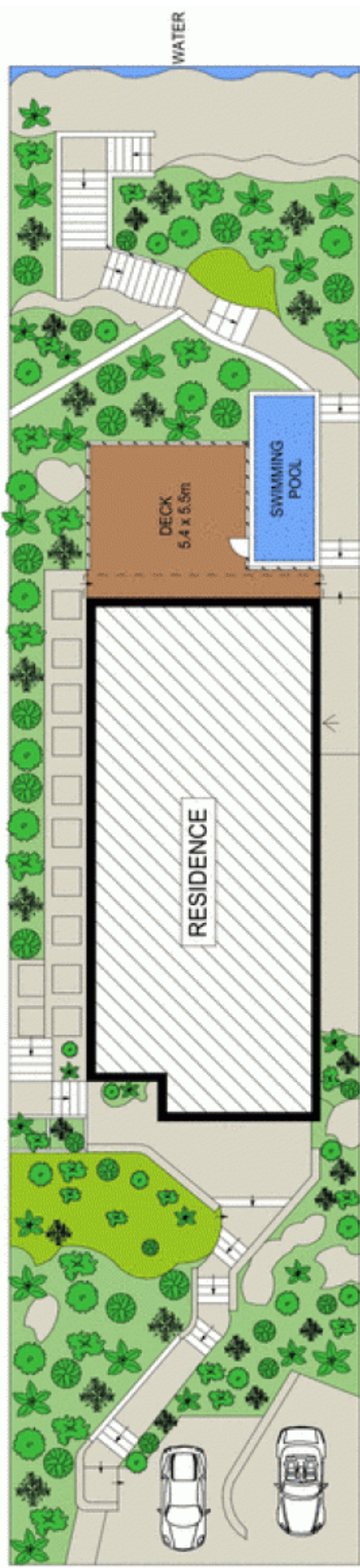
Price:

Price guide over \$2,500,000

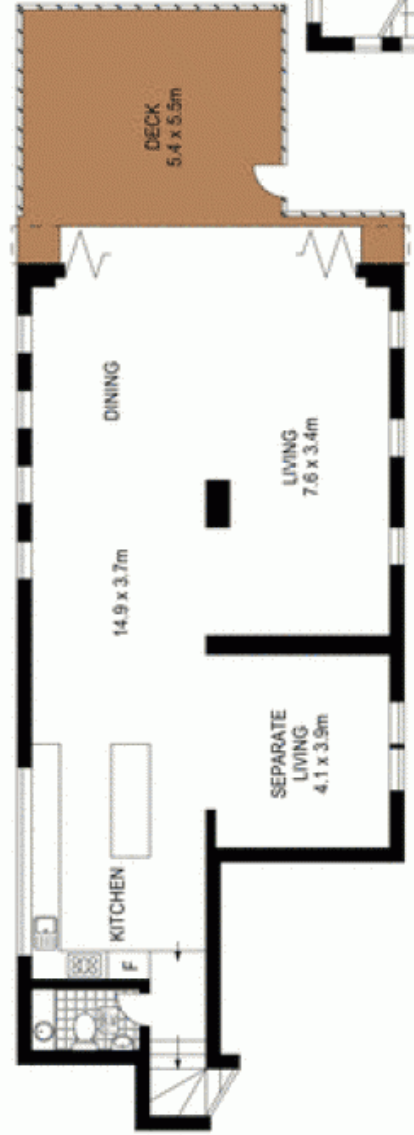
Stone Real Estate

02 9949 2822

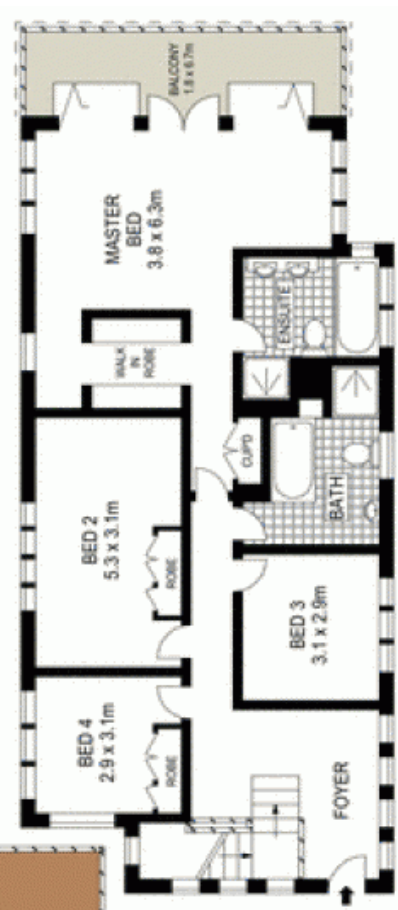
Seaforth



SITE PLAN (NOT TO SCALE)



LOWER GROUND LEVEL



ENTRY LEVEL



23 Bligh Crescent, Seaforth

McGrath