



1 Old Sydney Road SEAFORTH, NSW

4

2

2

### Architect designed with commanding Middle Harbour views

Offered for the first time in over 50 years, with magnificent views over Middle harbour, this family home captures daylong natural light from an all pervading use of glass. It adjoins an expansive lawn reserve, metres to Clontarf Beach and The Spit, plus accessible to the CBD.

- Lower family room with kitchenette; informal dining off kitchen
- Formal lounge and dining with vaulted ceilings and panoramas
- Wraparound balconies, paved terraces and easycare gardens
- Stylish granite island kitchen boasts Smeg gas appliances
- Four bedrooms, private upstairs master with balcony access
- Fourth bedroom provides versatility as home office or study
- Light filled coastal-inspired bathrooms, superior fixtures
- Glass display cabinets, creamy neutral tones, air conditioning

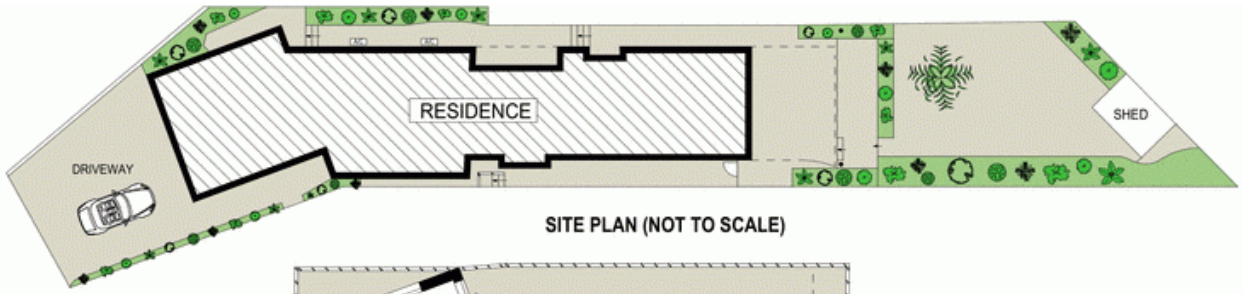
Price:

Price guide over \$1,580,000

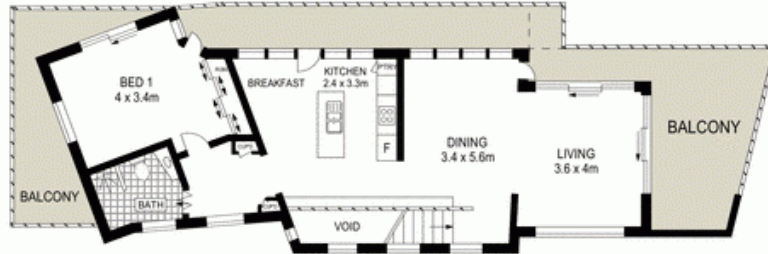
**Stone Real Estate**

02 9949 2822

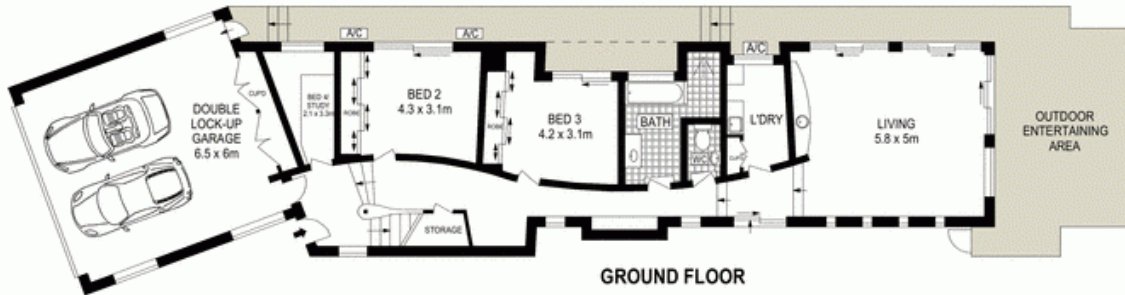
**Seaforth**



SITE PLAN (NOT TO SCALE)



FIRST FLOOR



GROUND FLOOR



Scale in metres. Indicative only. Dimensions are approximate. All information contained herein is gathered from sources we believe to be reliable. However we cannot guarantee its accuracy and interested persons should rely on their own enquiries.



1 Old Sydney Road, Seaforth

**McGrath**