



12 Judith Street Seaforth, NSW

5

3

1

Flawlessly designed ? An enviable lifestyle awaits

Impressive contemporary architecture coupled with a striking facade defines this remarkable family residence, privately positioned on 581sqm amongst landscaped gardens. Devoted to an emphasis on luxury living and filled with natural light, the home is impeccably appointed for effortless living and family entertaining.

Price:

Guide \$2,400,000 - \$2,550,000



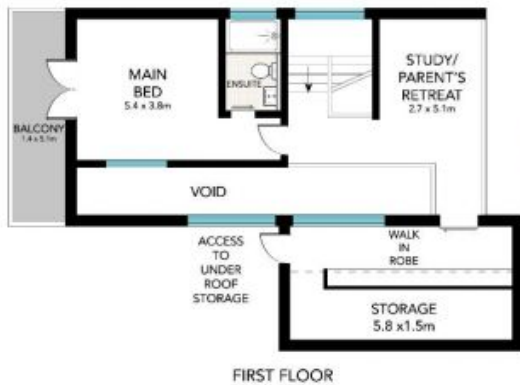
Louise Ashdown

0414 764 108



Maria Cassarino

0411 818 093



All the information provided has been collected from reliable sources but cannot be guaranteed for accuracy. Interested persons should rely on their own enquiries. All dimensions are approximate and indicative only.



12 JUDITH STREET, SEAFORTH