



39 Edmund Avenue Figtree, NSW

3

2

2

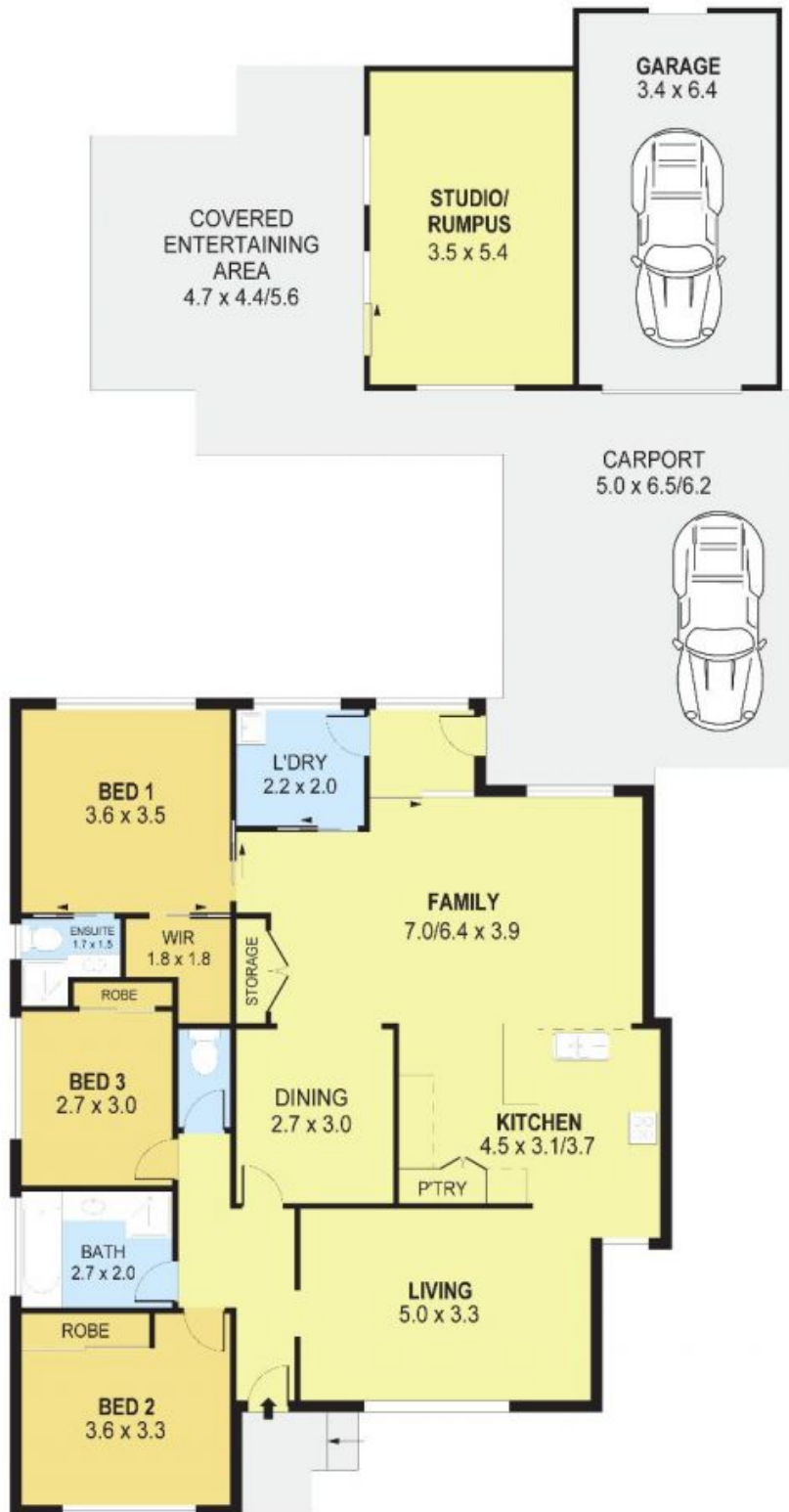
Single Level Family Comfort...

Occupying a level 595sqm block with superb northerly views, this single level family home has been immaculately maintained since the day it was built, which means you can move in and put your feet up. With a rarity of 2 spacious living areas, separate dining and large kitchen in a sought after quiet family neighbourhood close to schools, shops and transport, this unique home is perfect for any sized family.

Price: \$627,000

Stone Real Estate

02 4228 1622
Illawarra



GROUND LEVEL



PLANS SHOWN ONLY INDICATIVE OF LAYOUT. DIMENSIONS ARE APPROXIMATE.
Ref. No: 36263

INT : 128m²
EXT : 66m²
STUDIO / GARAGE : 41m²