



28 Meadow Street Corrimal, NSW

4

2

2

**A Rare Find...**

Situated in a peaceful location, this spacious dual level home offers superb scope to capitalise on a fantastic position. Perfect for a growing family, the floor plan includes casual living and dining areas that open to a spacious, level rear garden and alfresco area. An ideal entry point or investment opportunity, it is convenient to shopping centre, schools and frequent transport.

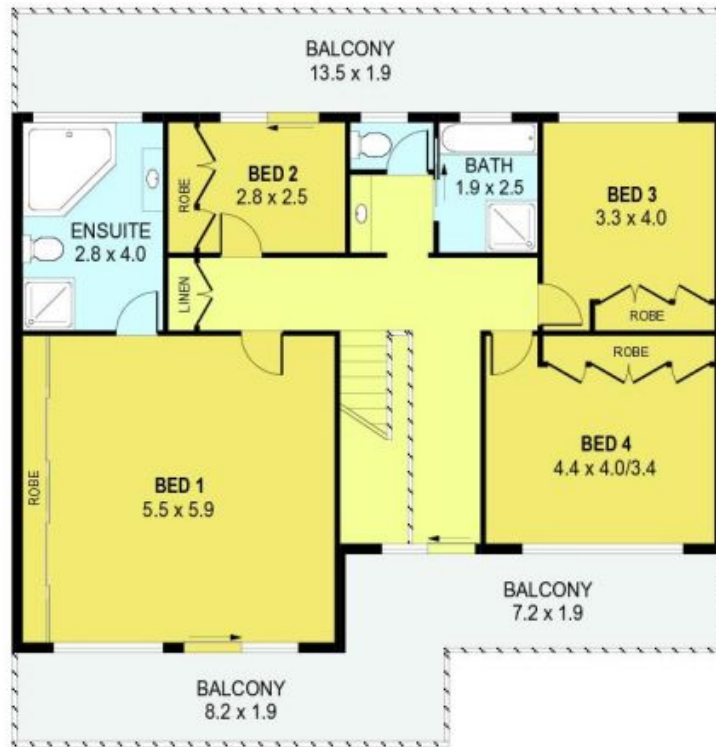
**Price:**

SOLD

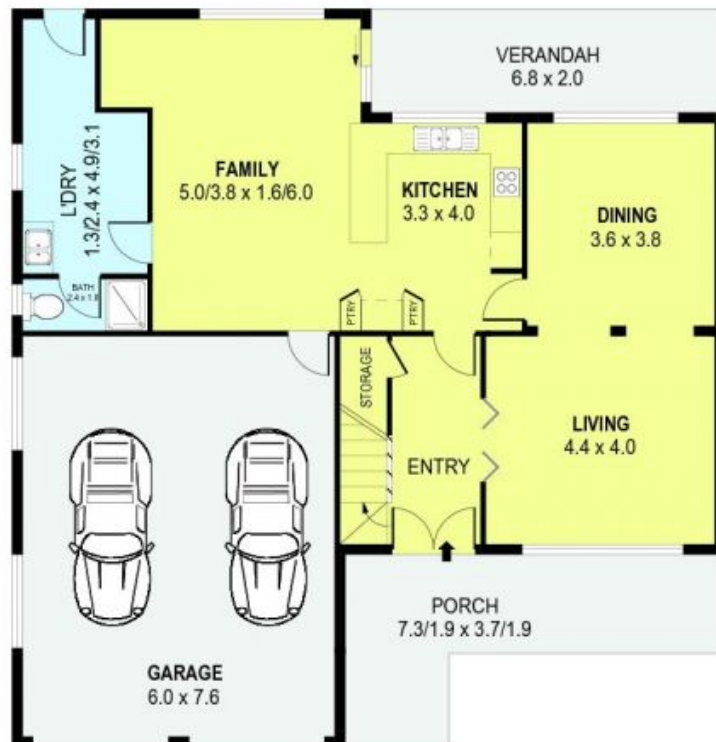


**Joe Paiano**

0417 124 313



UPPER LEVEL



GROUND LEVEL



SCALE (METRES)

PLANS SHOWN ONLY INDICATIVE OF LAYOUT. DIMENSIONS ARE APPROXIMATE.  
Ref. No: 35671

INT : 215m<sup>2</sup>  
EXT : 84m<sup>2</sup>  
GARAGE : 46m<sup>2</sup>

28 MEADOW STREET

CORRIMAL