

618 Northcliffe Drive Berkeley, NSW

4  1  1 

An Excellent Start...

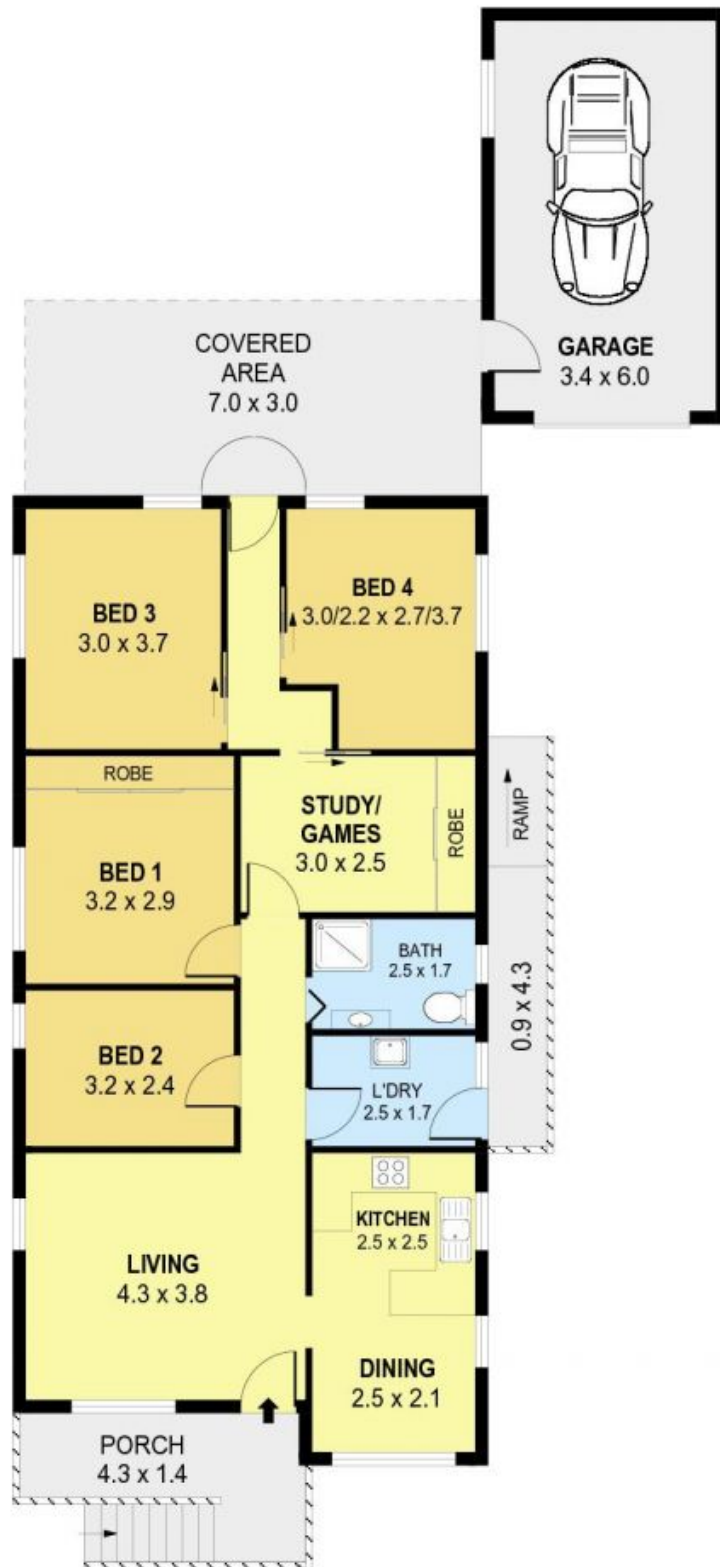
Absolutely comfortable from top to toe, this freshly presented solid-brick home caters in easy style to the demands of modern living. Introduced via the breezy front porch, the traditional interior layout comprises separate lounge and dining areas and a private hallway leading to four good-sized bedrooms. If you work from home, a defined study means that no bedrooms need be sacrificed. To the north-facing rear, a covered patio steps up to meet the easy-care, fully fenced backyard. Boasting a central lifestyle location moments to local transport, schools and sporting amenities, the home exudes classic appeal for first home buyers, growing families and investors.

Price: \$447,000



Michael Schlegel

0418 627 220



0 1 2 3 4 5
SCALE (METRES)

PLANS SHOWN ONLY INDICATIVE OF LAYOUT. DIMENSIONS ARE APPROXIMATE.
 Ref. No. 39022

618 NORTHCLIFFE DRIVE

BERKELEY