

7 Mary Avenue Figtree, NSW

3 

1 

2 

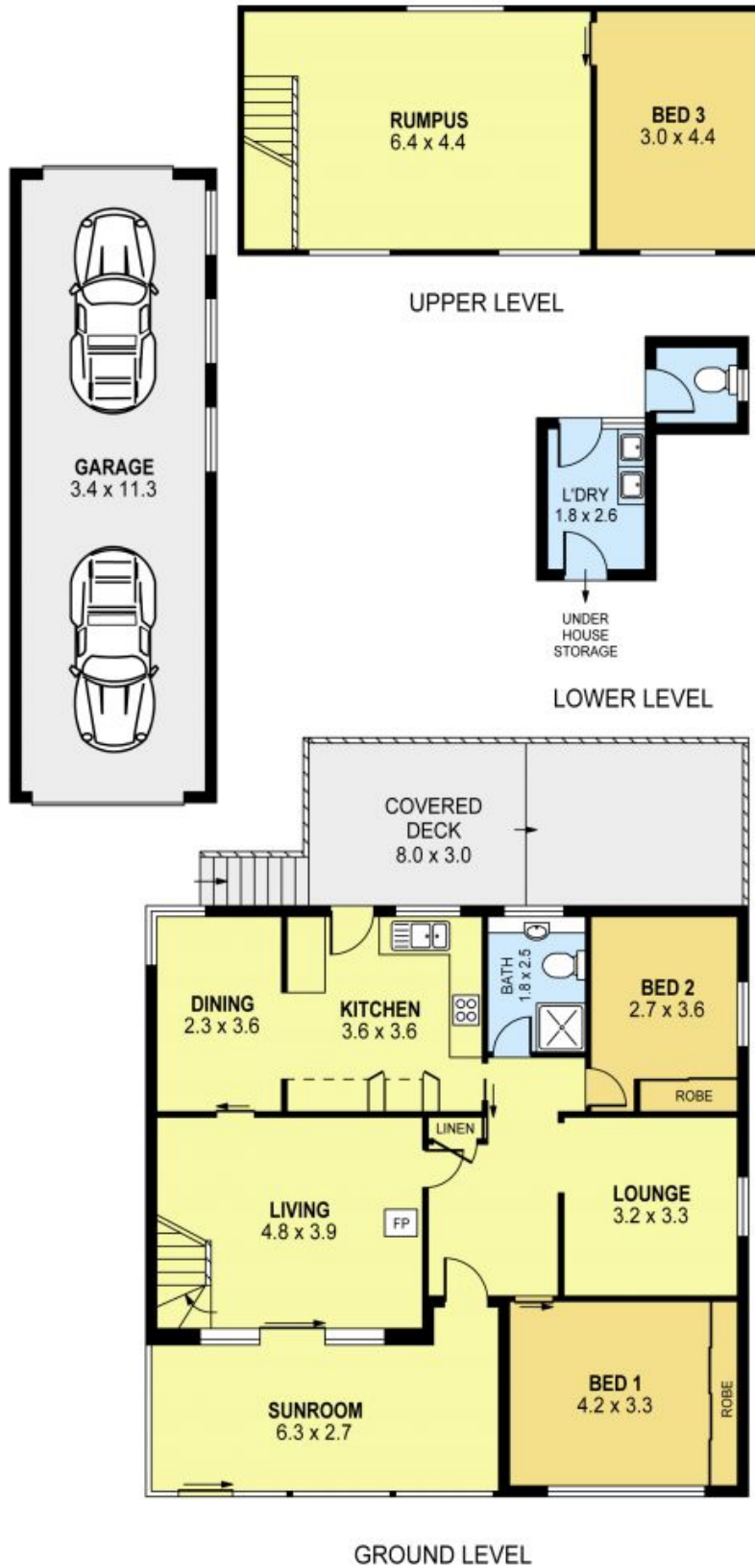
Comfort and Potential...

Price: \$674,500



**Michael Schlegel**

0418 627 220



0 1 2 3 4 5 **SCALE (METRES)**

PLANS SHOWN ONLY INDICATIVE OF LAYOUT. DIMENSIONS ARE APPROXIMATE.  
 Ref. No. 42734

7 MARY AVENUE

FIGTREE