



20 Bellebrae Avenue Mount Ousley, NSW



Unique Family Living...

Price: \$900,000



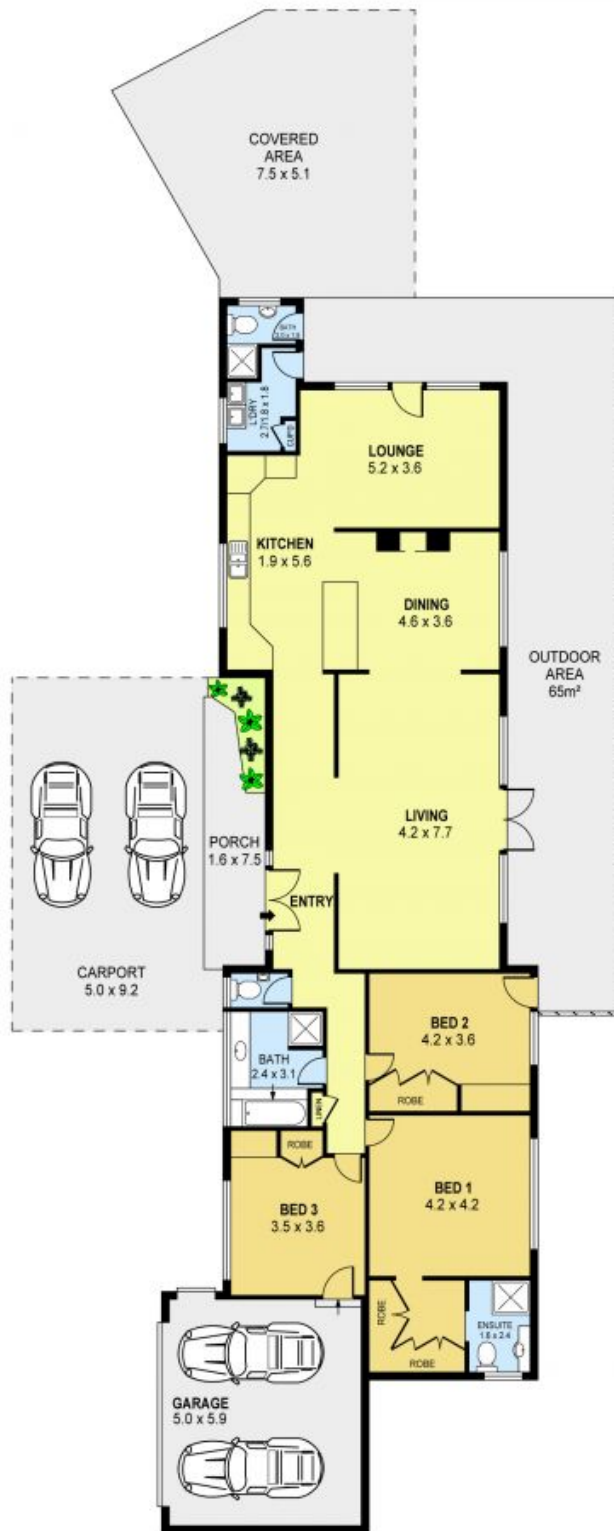
Michael Schlegel

0418 627 220



Michael Schlegel

0418 627 220



LOWER LEVEL

GROUND LEVEL



SCALE (METRES)

PLANS SHOWN ONLY INDICATIVE OF LAYOUT. DIMENSIONS ARE APPROXIMATE.
Ref. No. 49514

20 BELLEBRAE AVENUE

MOUNT OUSLEY