



18/22-24 Victoria Street Wollongong, NSW 2 1 1

Sophisticated City Living...

The Madison Apartments... Enjoying a central CBD location and capturing far-reaching escarpment views, this 3rd-floor city apartment absolutely dazzles with cosmopolitan appeal. Ultra-convenient and low maintenance, it boasts finely-proportioned living spaces and crisp in/outdoor flow to the sunny entertainers' balcony complete with a prized northerly aspect and escarpment backdrop. Complete with A/V intercom entry, lift access and secure basement parking, is your opportunity to capture this city lifestyle being within a moments stroll to Wollongong city centre, boutique shops, cafes and restaurants.

Price: \$520,000
Council Rates: \$317.31 p/q
Water Rates: \$168.41 p/q
Strata Rates: \$799.85 p/q



Paul Piacentin

0411 754 884

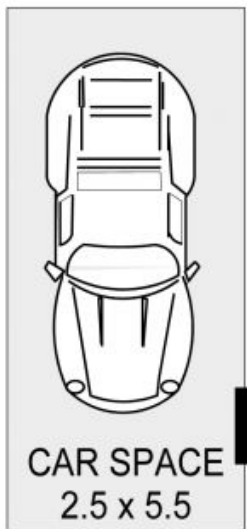


Paul Piacentin

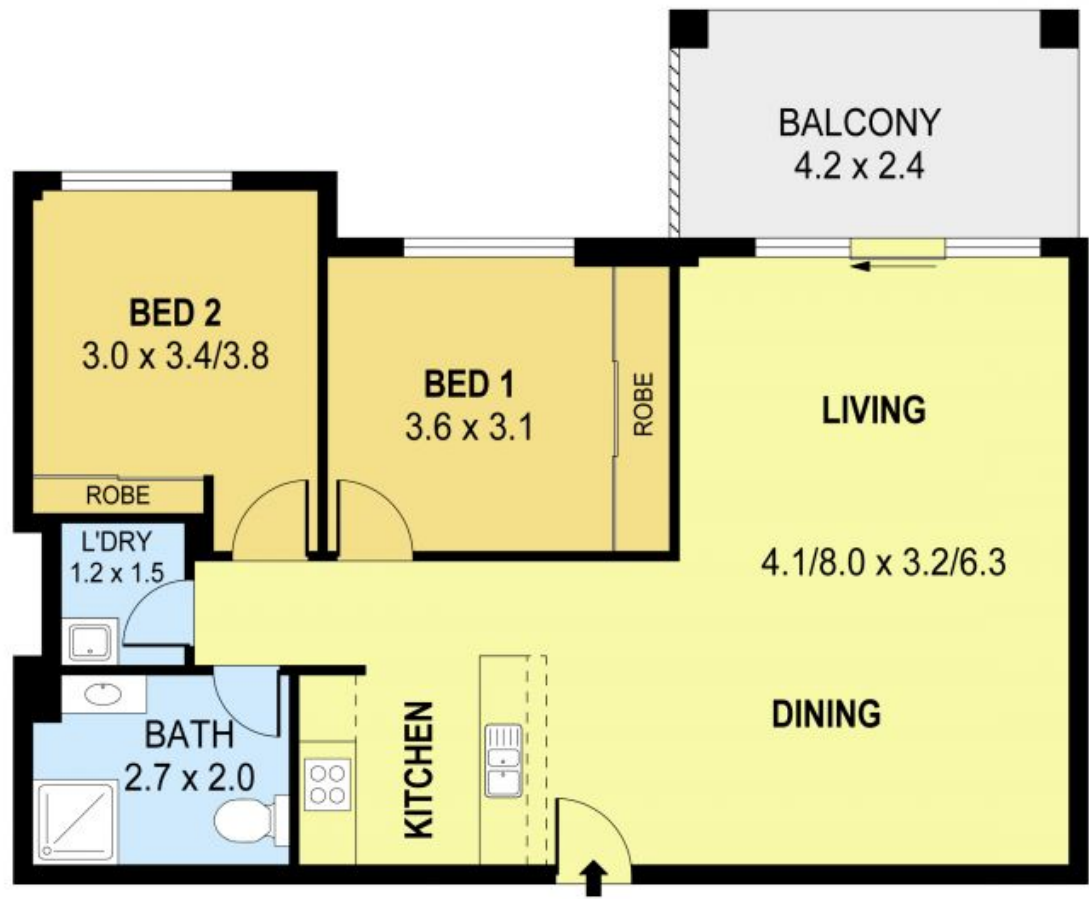
0411 754 884



DETACHED



DETACHED



PLANS SHOWN ONLY INDICATIVE OF LAYOUT. DIMENSIONS ARE APPROXIMATE.
Ref. No: 49742

UNIT 18, 22-24 VICTORIA STREET

WOLLONGONG