



1D Eldon Lane Beecroft, NSW

3

3

2

### Secluded and peaceful townhouse

'Strathavon' is a large Torrens title townhouse tucked away at the end of a private drive in a quiet cul-de-sac. Backing onto a bush reserve, it offers a haven of light and space in tranquil natural surrounds with leafy outlooks from every window.

Price:

Contact Agent



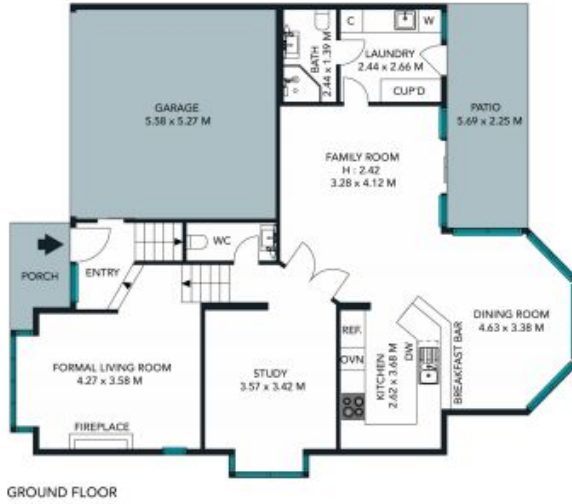
**Kevin Dearlove**

0403 338 302



**James Ramsay**

0420 665 913



The site plan and floor plan is not to scale. Measurements are indicative and in metres. Bushes and trees are placed for illustration purposes only.





GROUND FLOOR



FIRST FLOOR

The interior style and design of this floor plan is designed for inspiration purposes to show the living spaces. It is not an exact replica of the furniture and fittings in the home.



**1D Eldon Lane, Beecroft**  
stonerealestate.com.au

Produced by DIAKRIT