

140 Lawrence Street Alexandria, NSW

4 3 1

Stylish terrace, superb locale

Placed in a wonderfully peaceful street is this stylish tri-level home of contemporary excellence offering an inner-city lifestyle of space, comfort and convenience, just an easy stroll to cafes, transport, shops and parks.

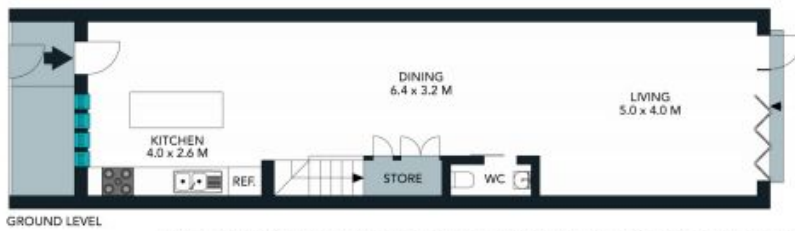
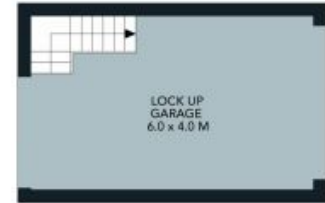
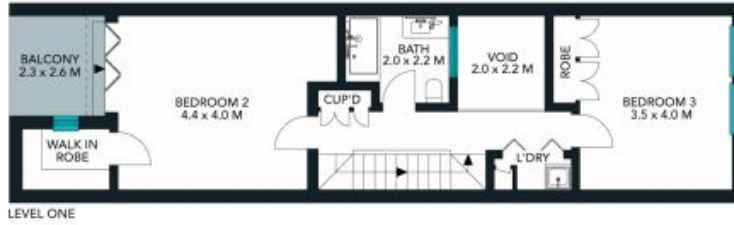
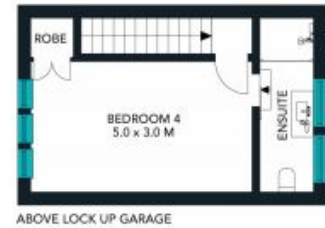
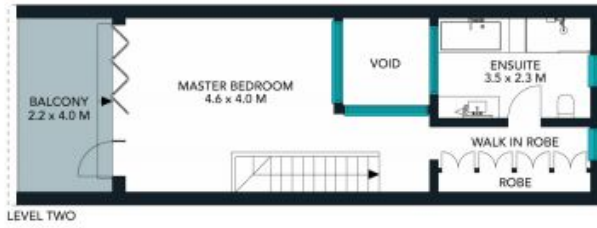
Price:

Contact Agent



Joseph Tropiano

0401 002 211



The floor plan is not to scale; measurements are indicative and in metres. Exterior elements are not in position. Plans should not be relied on. Interested parties should make and rely on their own enquiries.



The floor plan is not to scale; measurements are indicative and in metres. All features included in this 3D plan are for inspiration purposes only. This is not an exact replica of the property or the position of exterior elements. Plans should not be relied on. Interested parties should make and rely on their own enquiries.

140 Lawrence Street, Alexandria
 stonerealestate.com.au

Produced by DIAKRIT