

12/37 Gladstone Street Newport, NSW 1  1  1 

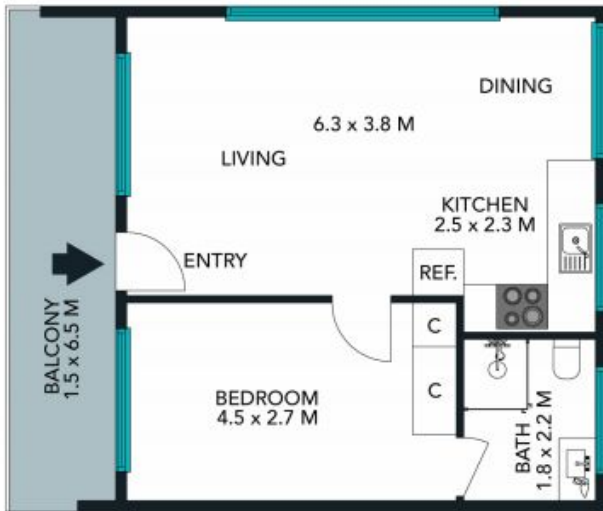
Chic Newport Pad

"37 Gladstone Street" offers location, location, location. Newport's CBD is moments away as are the sands of Newport Beach and favoured Pittwater's paradise. This chic apartment is positioned on the first floor and at the rear of the block with one common wall. This one bedder captures plenty of light, with a neat and tidy renovation. An ideal investment, downsizer or first home.

Price: \$640,000
Council Rates: \$1,486.00/year (approx)
Water Rates: \$172.00 p/q
Strata Rates: \$836.00 p/q

Stone Mona Vale

02 8030 8549



COVERED PARKING SPACE

(NOT IN POSITION)

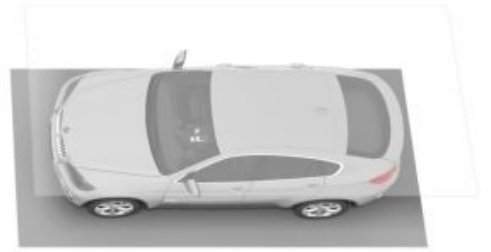


TOTAL SQM ON TITLE : 51 SQM

The floor plan is not to scale; measurements are indicative and in metres. Exterior elements are not in position. Plans should not be relied on. Interested parties should make and rely on their own enquiries.

12/37 Gladstone Street, Newport
 stonerealestate.com.au

Produced by DIAKRIT



The floor plan is not to scale; measurements are indicative and in metres. All features included in this 3D plan are for inspiration purposes only. This is not an exact replica of the property or the position of exterior elements. Plans should not be relied on. Interested parties should make and rely on their own enquiries.

12/37 Gladstone Street, Newport
stonerealestate.com.au

Produced by DIAKRIT