



23/210-214 Longueville Road Lane Cove, NSW



Sydney city views and an unbeatable location

Leafy district views stretching all the way to the Harbour Bridge and city skyline create a wonderful outlook for this top floor apartment. Flooded with light, its elevated rear position is exceptionally private and catches gorgeous breezes. A stroll to Lane Cove Village shops, cafes and dining, it is an appealing investment or first home in a convenient setting.

Price: \$780,000



Amy Valenti

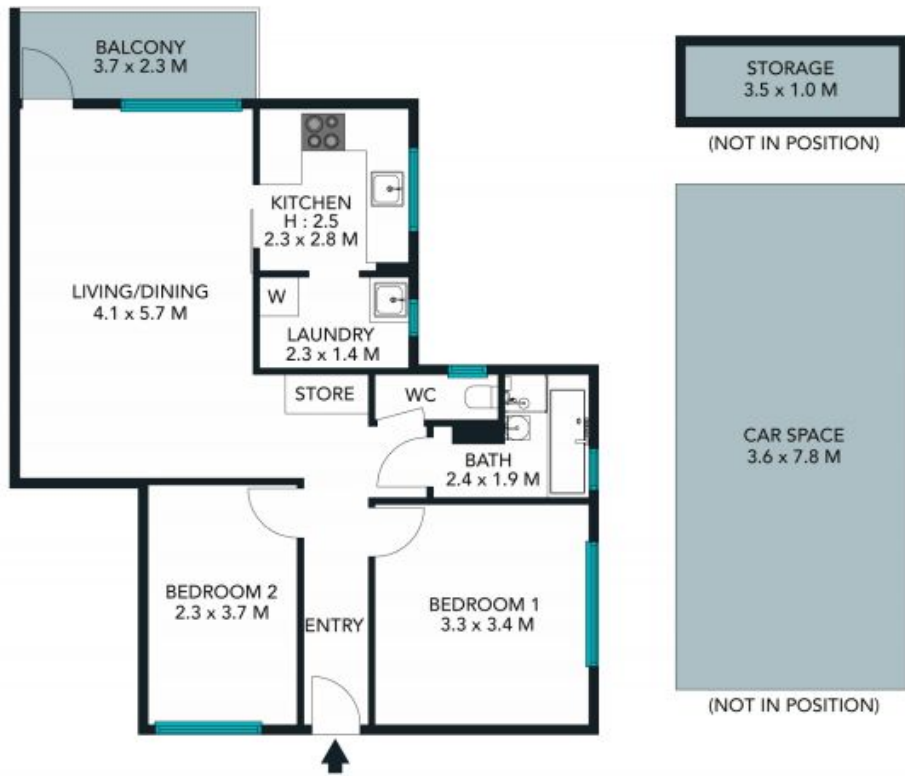
0459 027 865



The floor plan is not to scale; measurements are indicative and in metres. All features included in this 3D plan are for inspiration purposes only. This is not an exact replica of the property or the position of exterior elements. Plans should not be relied on. Interested parties should make and rely on their own enquiries.

23/210-214 Longueville Road, Lane Cove
stonerealestate.com.au

Produced by DIAKRIT



The floor plan is not to scale; measurements are indicative and in metres. Exterior elements are not in position. Plans should not be relied on. Interested parties should make and rely on their own enquiries.



23/210-214 Longueville Road, Lane Cove
 stonerealestate.com.au

Produced by DIAKRIT