



46 Waterview Street Mona Vale, NSW



Stylish and easy living

Situated on the corner of Waterview Street and Delwood Close you will find this level and spacious home that captures the sun throughout the day. Entertaining is a focus here with the open plan living room and expansive covered deck. Family BBQ's will be welcomed and the lawn areas will please the kids. A cross between contemporary and classic finishes makes styling the home a breeze.

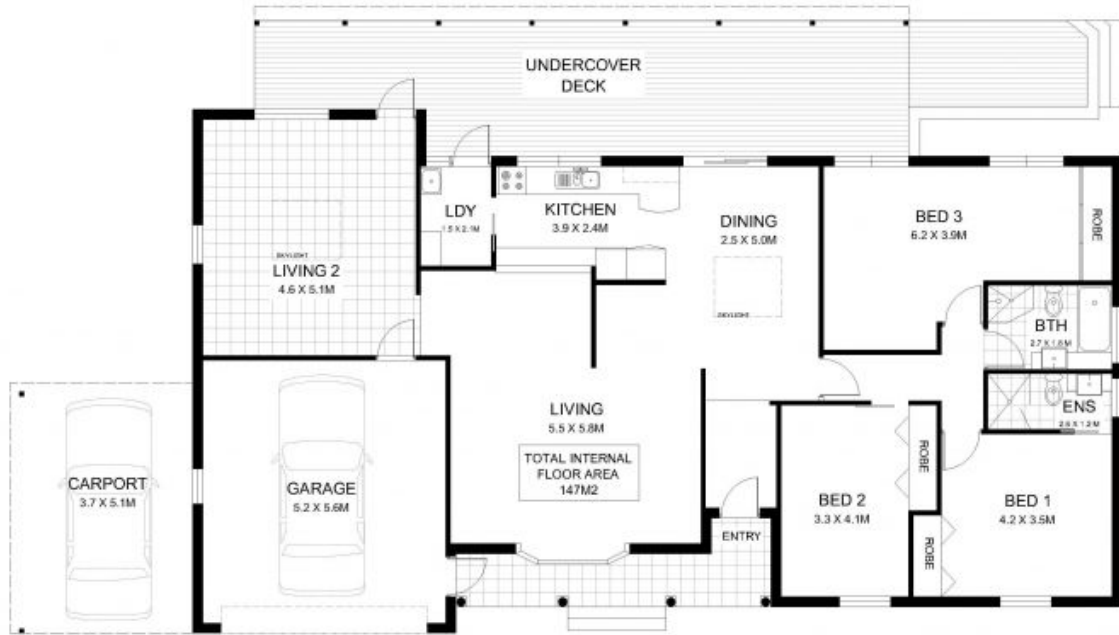
Price: SOLD \$1,485,000
Council Rates: \$530.00 p/q
Water Rates: \$172.00 p/q



Simone Sinclair

0405 470 250

46 WATERVIEW ST, MONA VALE



BEFORE THESE FLOORPLANS ARE SET
ASPECTIVE OF EXISTING SURROUNDING
PROGRAMS, NO LIABILITY ACCEPTED, PREPARED
BY ARCHITECTURAL DESIGN