



110 Chapman Avenue Beecroft, NSW

2

1

1

Double brick cottage on large 1,252sqm block

'Coolamon' is a freshly updated double brick 1940s home, tightly-held and meticulously maintained, on 1,252sqm in a quiet cul-de-sac street. A single level sanctuary featuring established gardens with a rear north aspect, the home displays timeless character and inviting charm in a park-like setting a short drive from the heart of Beecroft village.

Price:

Contact Agent



Kevin Dearlove

0403 338 302

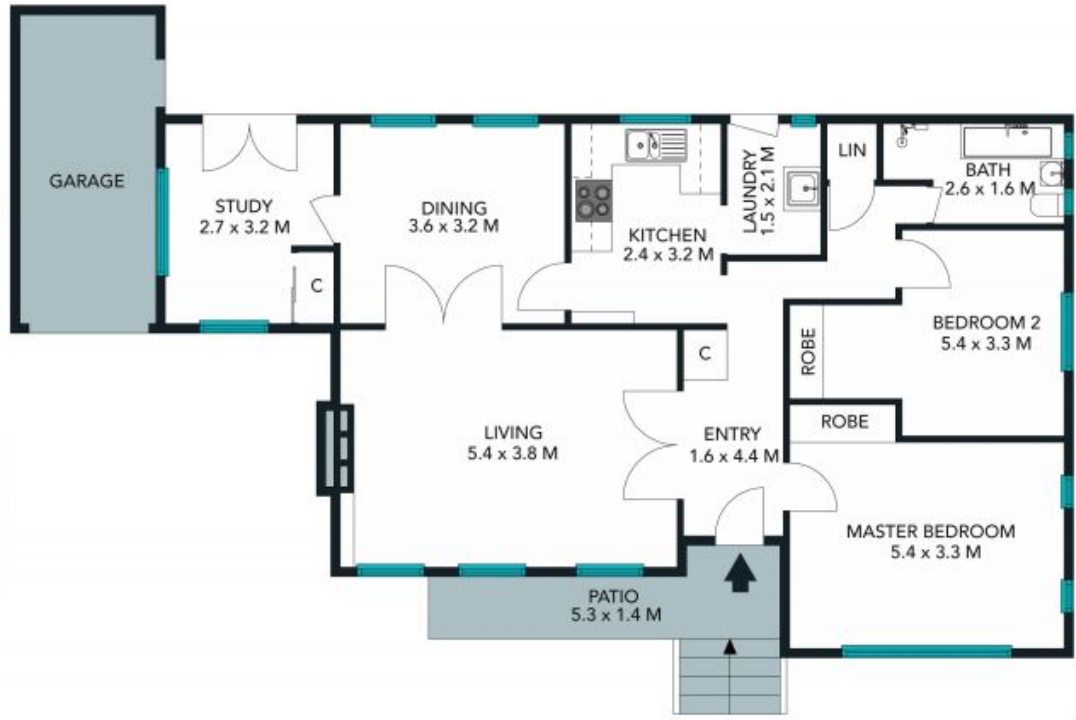


James Ramsay

0420 665 913



SITEPLAN



The site plan and floor plan are not to scale; measurements are indicative and in metres. Bushes and trees are placed for illustration purposes. Plans should not be relied on. Interested parties should make and rely on their own enquiries.



110 Chapman Avenue, Beecroft
stonerealestate.com.au

Produced by DIAKRIT



The floor plan is not to scale; measurements are indicative and in metres. All features included in this 3D plan are for inspiration purposes only. This is not an exact replica of the property or the position of exterior elements. Plans should not be relied on. Interested parties should make and rely on their own enquiries.

110 Chapman Avenue, Beecroft
stonerealestate.com.au

Produced by DIAKRIT