

2/5 Whitfield Place Lake Illawarra, NSW 2  1  1 

Light and style in an easycare unit

Set in a boutique building, this quality property represents a fantastic lifestyle asset in a peaceful cul-de-sac location. The smartly presented apartment takes entry level of style with freshly updated interiors plus a great position.

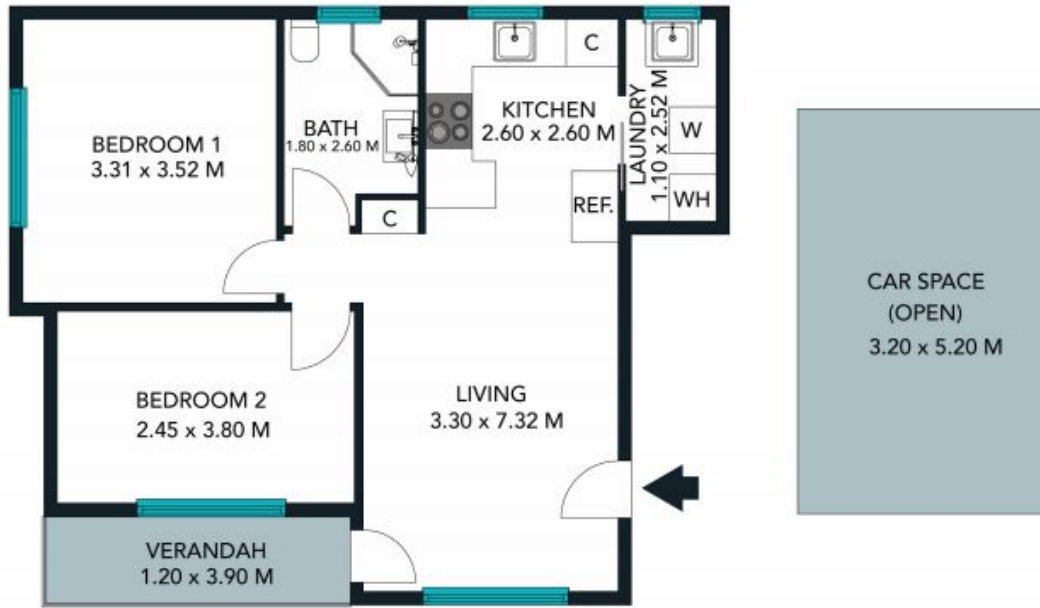
Price: \$295 per week
Bond: \$1,180
Available Date: 29/06/2018



Pipah Grubb
0421 201 846



Darnell Haselau
0426 400 240



TOTAL SQM ON TITLE : 62.5 SQM

The floor plan is not to scale. Measurements are indicative and in metres.

2/5 Whitfield Place , Lake Illawarra
 stonerealestate.com.au

Produced by DIAKRIT



The interior style and design of this floor plan is designed for inspiration purposes to show the living spaces. It is not an exact replica of the furniture and fittings in the home.

2/5 Whitfield Place , Lake Illawarra
stonerealestate.com.au

Produced by DIAKRIT