

40 Ellery Parade Seaforth, NSW

4 2 2

Family classic in prime location, north facing rear and panoramic views

Immersed in a breathtaking panorama that sweeps the city and Chatswood skylines and takes in Middle Harbour, this elegant dual level home has been transformed into a versatile family entertainer with further scope to grow and be enhanced. Nestled on 727sqm with level north facing rear lawns and a sparkling pool, its premier address is within a stroll of city buses as well as Seaforth Primary School and the village.



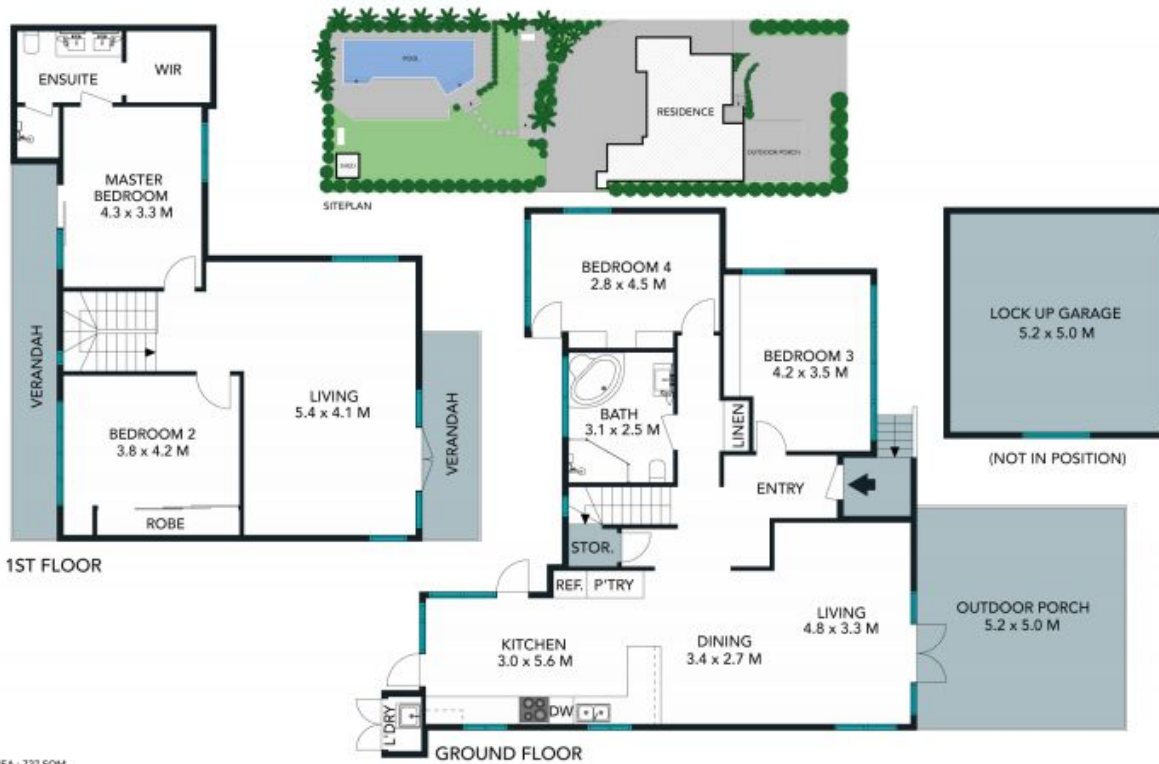
Maria Cassarino

0411 818 093



Julian Rowe

0412 544 448



TOTAL LAND AREA : 727 SQM
 TOTAL LIVING AREA : 186 SQM

The site plan and floor plan are not to scale, measurements are indicative and in metres. Bathes and trees are placed for illustration purposes. Plans should not be relied on. Interested parties should make and rely on their own enquiries.



40 Ellery Parade, Seaforth
 stonerealestate.com.au

Produced by DIAKRIT



1ST FLOOR

GROUND FLOOR



The floor plan is not to scale, measurements are indicative and in metres. All features included in this 3D plan are for inspiration purposes only. This is not an exact replica of the property or the position of exterior elements. Plans should not be relied on. Interested parties should make and rely on their own enquiries.

40 Ellery Parade, Seaforth
stonerealestate.com.au

Produced by DIAKRIT