



11/47 Crown Road Queenscliff, NSW

- 1
- 1
- 1

Designer pad with panoramic beach and ocean views

Soaring above Freshwater Beach with "eagle's-eye" views sweeping the surf and ocean's horizon to Manly Beach and the harbour, this spectacular top floor apartment is in a class of its own. Superbly crafted throughout its bright and spacious interiors and blessed with a giant seaside terrace, its exclusive headland setting is within a three minute stroll of Freshwater Beach.

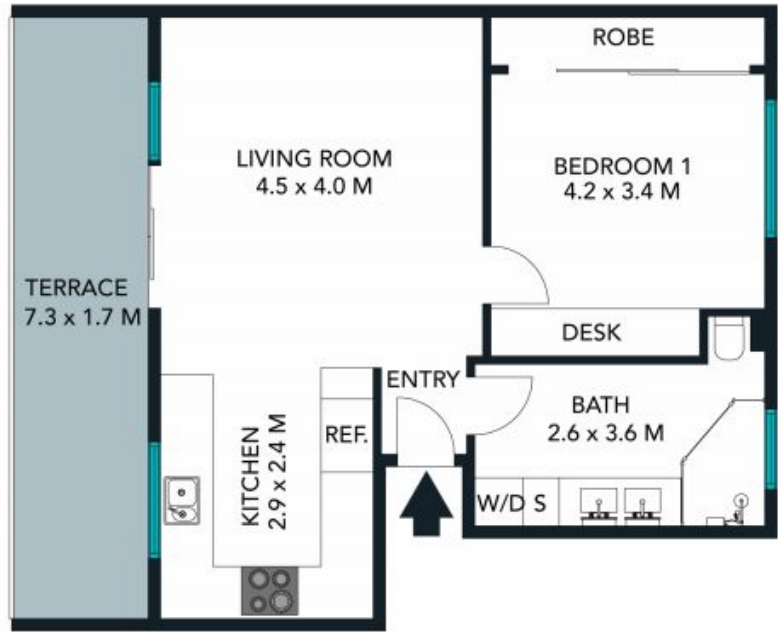
Price: Contact Agent



Eddy Piddington
0414 333 907



(NOT IN POSITION)



The floor plan is not to scale; measurements are indicative and in metres. Exterior elements are not in position. Plans should not be relied on. Interested parties should make and rely on their own enquiries.



The floor plan is not to scale; measurements are indicative and in metres. All features included in this 3D plan are for inspiration purposes only. This is not an exact replica of the property or the position of exterior elements. Plans should not be relied on. Interested parties should make and rely on their own enquiries.

11/47 Crown Road, Queenscliff
stonerealestate.com.au

Produced by DIAKRIT