



14 Lightcliff Avenue Lindfield, NSW



Classic elegance in Lindfield's premier east-side

A charming home of timeless appeal, this light-filled family residence's spacious free-flowing interiors and large entertainer's garden promise a wonderful lifestyle opportunity perfect for all ages. Set privately on a 980sqm (approx) parcel of land at the end of a family-friendly cul-de-sac, it boasts an ultra-convenient position an effortless stroll to local village shops and rail.

Price:

Sold - contact agent



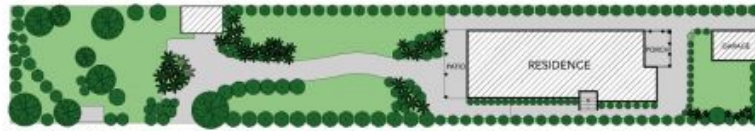
Steven Kourdis

0402 555 675



Jill Henry

0416 493 555



SITE PLAN



The site plan and floor plan are not to scale; measurements are indicative and in metres. Bushes and trees are placed for illustration purposes. Plans should not be relied on. Interested parties should make and rely on their own enquiries.



14 Lightcliff Avenue, Lindfield
 stonerealestate.com.au

Produced by DIAKRIT



The floor plan is not to scale; measurements are indicative and in metres. All features included in this 3D plan are for inspiration purposes only. This is not an exact replica of the property or the position of exterior elements. Plans should not be relied on. Interested parties should make and rely on their own enquiries.

14 Lightcliff Avenue, Lindfield
stonerealestate.com.au

Produced by DIAKRIT