

2/307 Condamine Street Manly Vale, NSW



Spacious and ultra convenient

Stylishly finished and filled with natural light, this first floor apartment is positioned for a lifestyle of outstanding convenience. Sleek, modern and boasting a generous, impressive floor plan, its free flowing design has been crafted to maximise the use of space. Fitted out with quality appointments, its mere footsteps from city bound buses, shops and easy access to beaches.

Price:

Contact agent



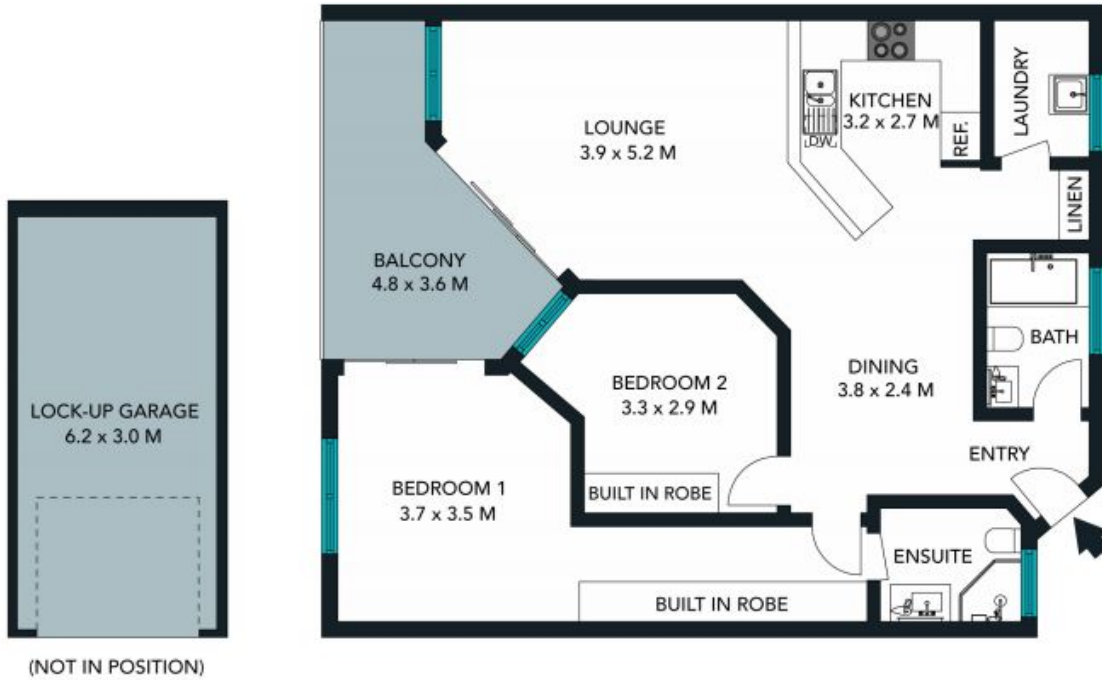
Eddy Piddington

0414 333 907



Zoe Thackeray

0449 167 420



The floor plan is not to scale; measurements are indicative and in metres. Exterior elements are not in position. Plans should not be relied on. Interested parties should make and rely on their own enquiries.



2/307 Condamine Street, Manly Vale
 stonerealestate.com.au

Produced by DIAKRIT



The floor plan is not to scale; measurements are indicative and in metres. All features included in this 3D plan are for inspiration purposes only. This is not an exact replica of the property or the position of exterior elements. Plans should not be relied on. Interested parties should make and rely on their own enquiries.

2/307 Condamine Street, Manly Vale
stonerealestate.com.au

Produced by DIAKRIT