



29/343 Sydney Road Balgowlah, NSW

2

1

1

Spacious penthouse living with panoramic views

Close to everything yet high above it all, this refreshed penthouse revels in sensational district, north harbour and ocean views from a prime southeast corner position atop the 'Biarritz' security building in the heart of Balgowlah. The apartment is bathed in all-day sun and framed by a wraparound balcony, while the location ensures the very best in lifestyle and convenience.

Price: \$1,440,000



Tim Mumford

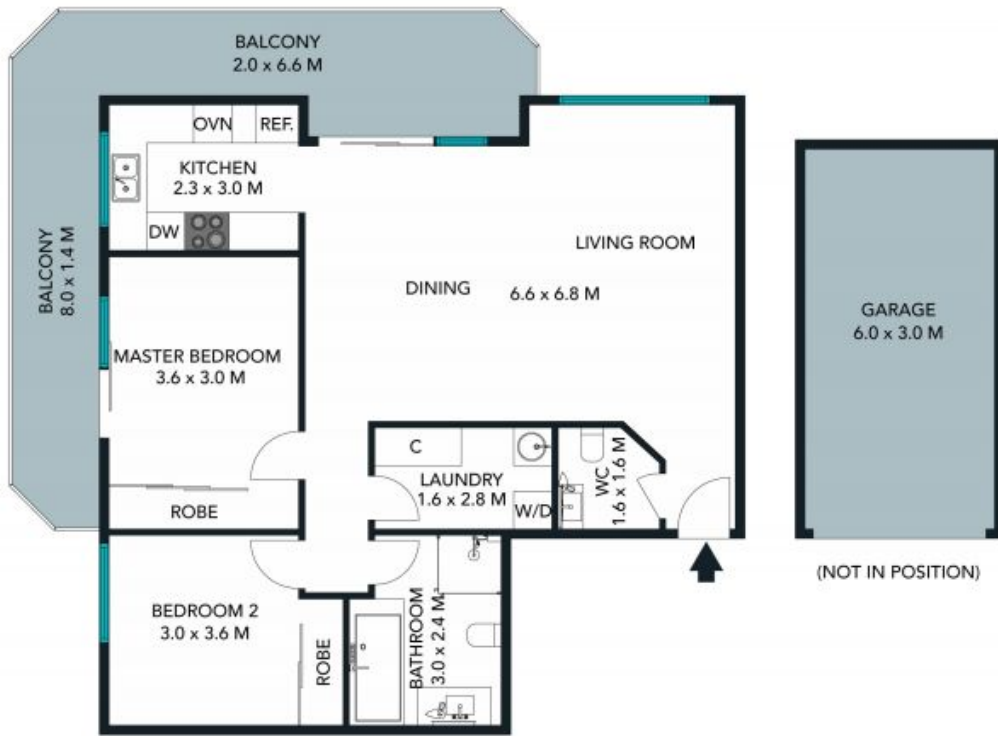
0421 942 693



The floor plan is not to scale; measurements are indicative and in metres. All features included in this 3D plan are for inspiration purposes only. This is not an exact replica of the property or the position of exterior elements. Plans should not be relied on. Interested parties should make and rely on their own enquiries.

29/343 Sydney Road, Balgowlah
stonerealestate.com.au

Produced by DIAKRIT



The floor plan is not to scale; measurements are indicative and in metres. Exterior elements are not in position. Plans should not be relied on. Interested parties should make and rely on their own enquiries.

29/343 Sydney Road, Balgowlah
 stonerealestate.com.au

Produced by DIAKRIT