



93 Shirley Road Roseville, NSW



Enviably opportunity in prestigious locale

With no heritage or conservation restrictions, this solid family home offers the opportunity for your dream home in an enviable, convenient location. Set on a sunny parcel of child friendly gardens, in one of Roseville's finest addresses, it offers the opportunity to live in and enjoy, renovate or knock-down and rebuild to create your dream home. In a convenient stroll to rail, shops, Loyal Henry Park, bus to Chatswood and moments to Lindfield Learning Village location.

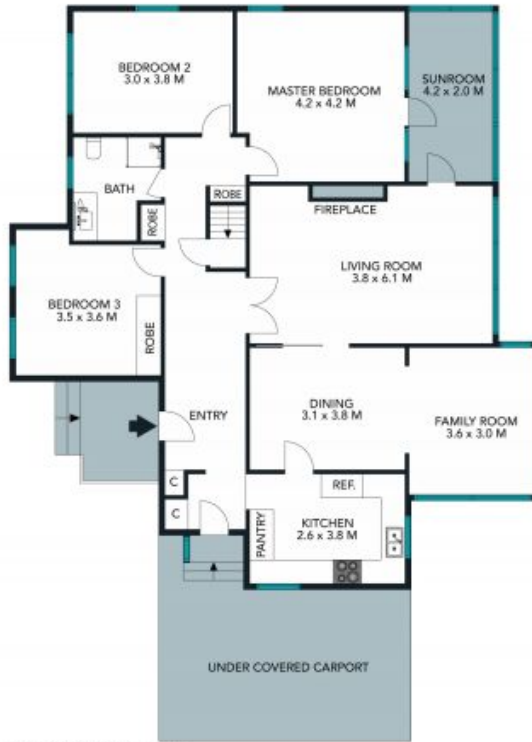
Price:

Contact Agent



Jill Henry

0416 493 555



GROUND FLOOR

The floor plan is not to scale; measurements are indicative and in metres. Exterior elements are not in position. Plans should not be relied on. Interested parties should make and rely on their own enquiries.



LOWER FLOOR



93 Shirley Road, Roseville
 stonerealestate.com.au

Produced by DIAKRIT



GROUND FLOOR



LOWER FLOOR



The floor plan is not to scale; measurements are indicative and in metres. All features included in this 3D plan are for inspiration purposes only. This is not an exact replica of the property or the position of exterior elements. Plans should not be relied on. Interested parties should make and rely on their own enquiries.

93 Shirley Road, Roseville
stonerealestate.com.au

Produced by DIAKRIT