



4 St Cloud Crescent Lake Heights, NSW



Character family residence with spectacular views

Overlooking picturesque Lake Illawarra and the ocean, this original home of substantial proportions presents extraordinary scope to capitalise on the remarkable location. Designed to provide dual living capabilities, the double storey layout is ideal for a growing family. The elevated 923sqm block is peacefully placed within walking distance of beautiful Kully and Joes Bay.

Price: \$765,000



Michael Farina

0421 522 713



Paul Piacentin

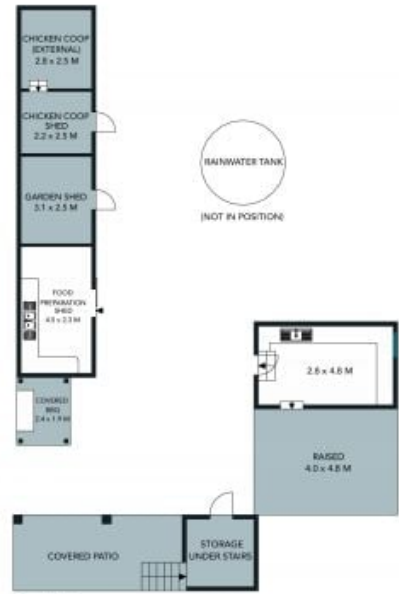
0411 754 884



GROUND FLOOR



FIRST FLOOR



CELLAR



The floor plan is not to scale, measurements are indicative and in metres. Exterior elements are not in position. Plans should not be relied on. Interested parties should make and rely on their own enquiries.

4 St Cloud Crescent, Lake Heights
 stonerealestate.com.au

Produced by DIAKRIT



The floor plan is not to scale; measurements are indicative and in metres. All features included in this 3D plan are for inspiration purposes only. This is not an exact replica of the property or the position of exterior elements. Plans should not be relied on. Interested parties should make and rely on their own enquiries.

4 St Cloud Crescent, Lake Heights
stonerealestate.com.au

Produced by DIAKRIT