



14 Lightcliff Avenue Lindfield, NSW



Application approved and deposit taken

A charming home of timeless appeal, this light-filled family residence's spacious free-flowing interiors and large entertainer's garden promise a wonderful lifestyle opportunity perfect for all ages. Set privately on a 980sqm (approx) parcel of land at the end of a family-friendly cul-de-sac, it boasts an ultra-convenient position an effortless stroll to local village shops and rail.

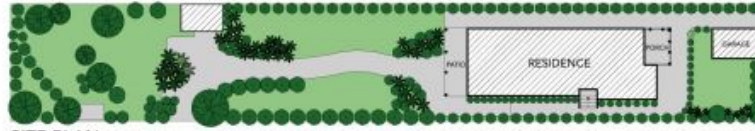
Price: \$1,500 per week

Available Date: 23/01/2019



Andrew Braid

0404 979 597



SITE PLAN



The site plan and floor plan are not to scale; measurements are indicative and in metres. Bushes and trees are placed for illustration purposes. Plans should not be relied on. Interested parties should make and rely on their own enquiries.



14 Lightcliff Avenue, Lindfield  
 stonerealestate.com.au

Produced by DIAKRIT



The floor plan is not to scale; measurements are indicative and in metres. All features included in this 3D plan are for inspiration purposes only. This is not an exact replica of the property or the position of exterior elements. Plans should not be relied on. Interested parties should make and rely on their own enquiries.

14 Lightcliff Avenue, Lindfield  
stonerealestate.com.au

Produced by DIAKRIT