



18 Palmgrove Place NORTH AVOCA, NSW

2 

1 

1 

Dual Access Opportunity

On offer for the first time is this two-bedroom, two-storey home on a predominantly level 715 sqm parcel of land with potential dual street access.

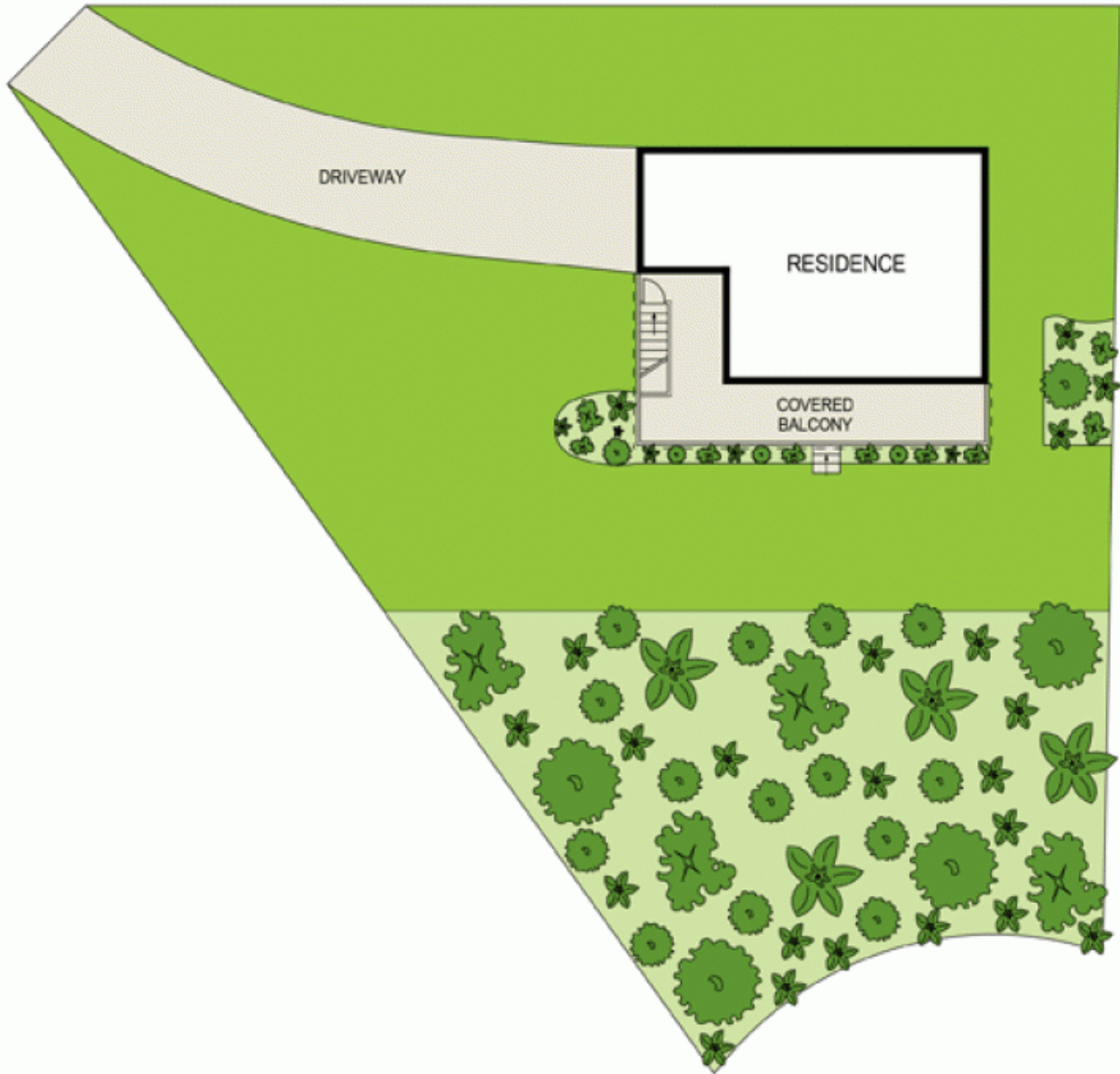
Price:

Auction



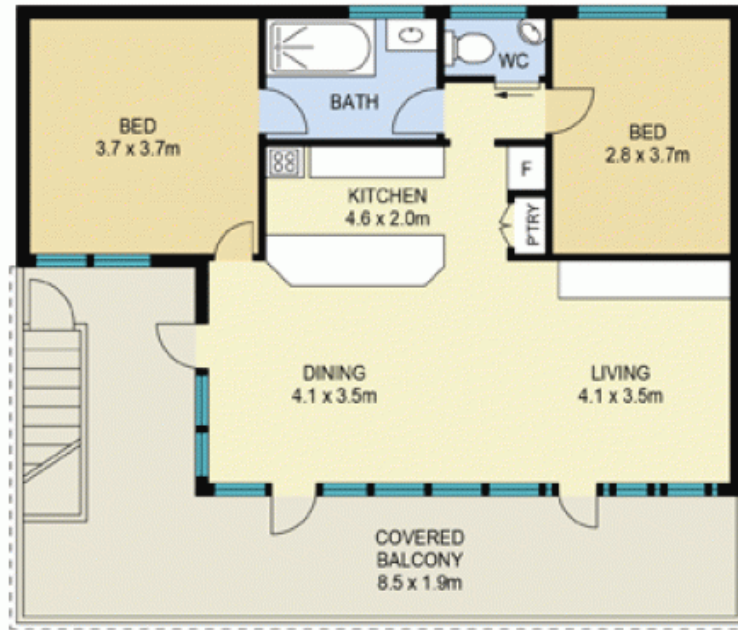
Andrew Thomson

0405 103 077

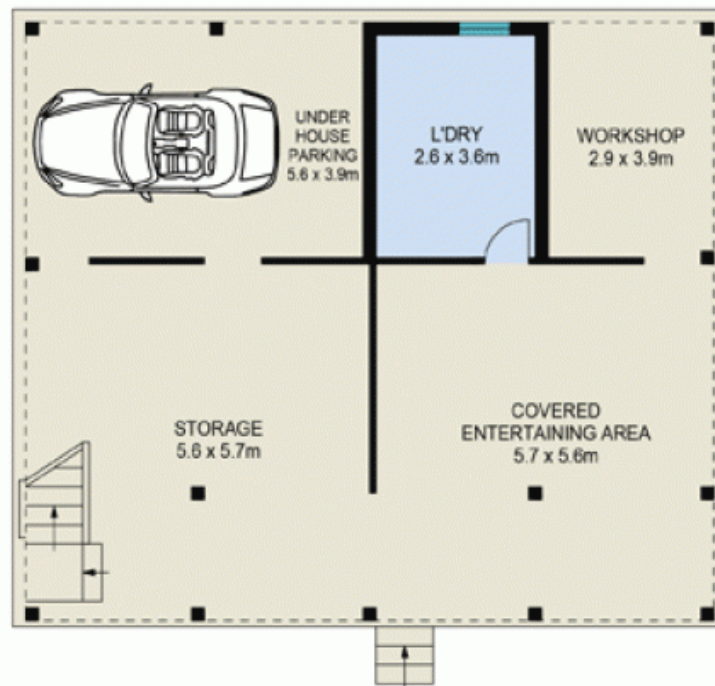


18 Palmgrove Place, North Avoca

Disclaimer : Plans prepared by Key 2 Exposure. Scale in metres. Indicative only. Dimensions are approximate.
All information contained herein is gathered from sources we believe to be reliable. However we cannot guarantee its accuracy and interested persons should rely on their own enquiries.



UPPER LEVEL



LOWER LEVEL



18 Palmgrove Place, North Avoca



INTERNAL FLOOR AREA : 79m²
 PARKING AREA : 22m²
 EXTERNAL AREA : 104m²

Disclaimer : Plans prepared by Key 2 Exposure. Scale in metres. Indicative only. Dimensions are approximate. All information contained herein is gathered from sources we believe to be reliable. However we cannot guarantee its accuracy and interested persons should rely on their own enquiries.

