



14 Dominish Crescent Camden South, NSW



Perfect Family Lifestyle

This large family home is perfect if you're looking for a convenient lifestyle with loads of space. The home enjoys multiple living areas, updated bathrooms, plenty of parking, inground pool, side access all sitting on a 711sqm block. The location is equally impressive being close to great schools, sporting grounds, local shops and walking distance to Camden Valley Inn.

- multiple living areas
- level 711sqm block
- 3 x car parking with side access
- ducted air-conditioning
- great size alfresco
- sparkling inground pool
- updated bathroom
- convenient location

Price:

Refer Agent



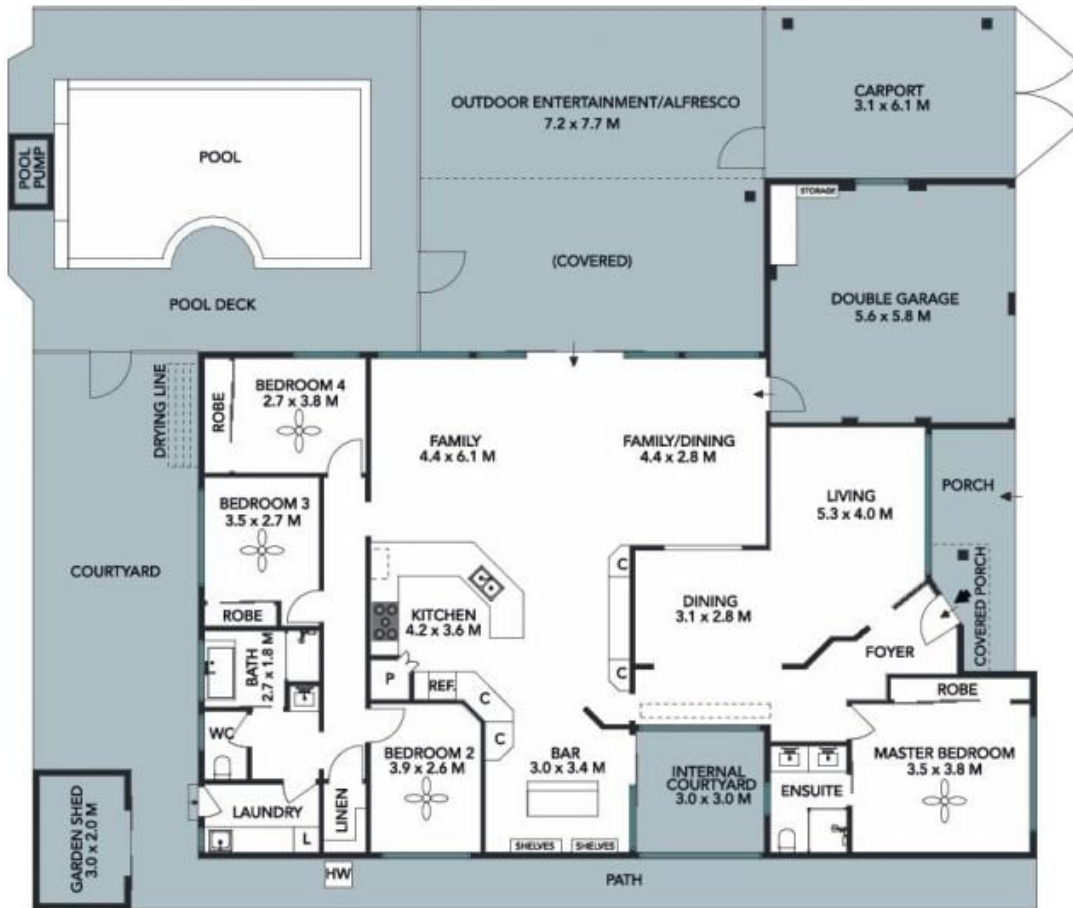
Peter Salisbury

0457 777 517



Peter Salisbury

0457 777 517



TOTAL LAND AREA : 711 SQM
 TOTAL LIVING AREA : 205 SQM

The floor plan is not to scale; measurements are indicative and in metres. Exterior elements are not in position. Plans should not be relied on. Interested parties should make and rely on their own enquiries. Produced by DIAKRIT



The floor plan is not to scale, measurements are indicative and in meters. All features included in this 3D plan are for inspiration purposes only. This is not an exact replica of the property or the position of exterior elements. Plans should not be relied on. Interested parties should make and rely on their own enquiries.

Produced by DIAKRIT