



52 Billarga Road Westleigh, NSW 4 2 2

Something Special

The embodiment of tranquillity and natural beauty, boasting a blue-ribbon setting adjoining and overlooking the National Park, this ideal family home delivers a stunning lifestyle. Perfectly positioned on its block to enjoy the surrounding splendour, it boasts a substantial floor plan with pool, close to shops, bus and schools.

Price: Contact Ian Clarke 0419 636 289



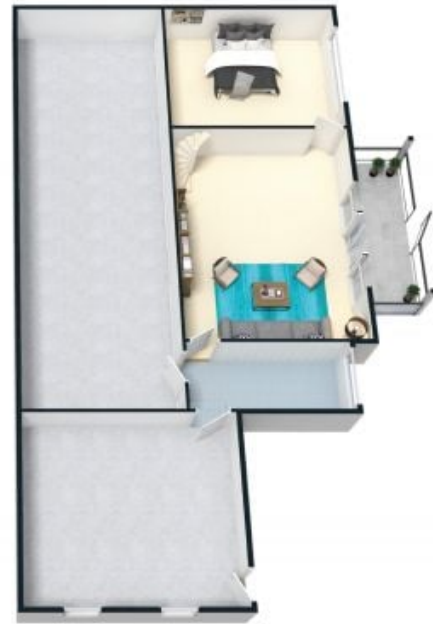
Ian Clarke
0419 636 289



Maureen Malouf
0412 336 769



FIRST FLOOR



GROUND FLOOR



The floor plan is not to scale; measurements are indicative and in metres. All features included in this 3D plan are for inspiration purposes only. This is not an exact replica of the property or the position of exterior elements. Plans should not be relied on. Interested parties should make and rely on their own enquiries.

52 Billarga Road, Westleigh
stonerealestate.com.au

Produced by DIAKRIT



FIRST FLOOR



GROUND FLOOR



The floor plan is not to scale; measurements are indicative and in metres. Exterior elements are not in position. Plans should not be relied on. Interested parties should make and rely on their own enquiries.

52 Billarga Road, Westleigh
 stonerealestate.com.au

Produced by DIAKRIT