



11 Green Street Tempe, NSW



A hidden gem offering easycare inner west style

Behind its unassuming double brick exterior, this classic period semi exceeds all first impressions with its surprisingly fresh and bright interior layout. It has been cleverly updated to offer a smart and easy-to-maintain home with a practical layout and a private north facing garden for entertaining. It makes a great lifestyle property in a boutique cul-de-sac that's within easy walking distance to the Cooks River parklands, Tempe station and local shops.

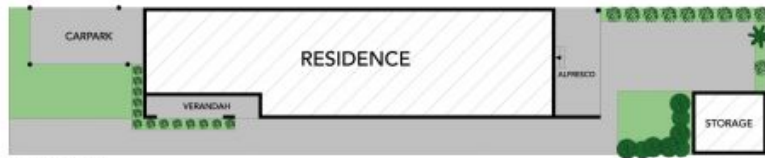
Price:

Contact Agent

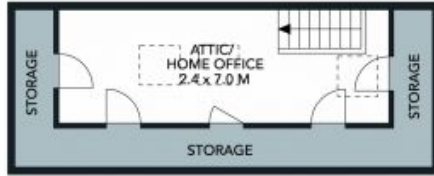


Adrian Vassallo

0406 484 994



SITE PLAN



FIRST FLOOR



(NOT IN POSITION)



GROUND FLOOR



The floor plan is not to scale; measurements are indicative and in metres. Exterior elements are not in position. Plans should not be relied on. Interested parties should make and rely on their own enquiries.



FIRST FLOOR



GROUND FLOOR



The floor plan is not to scale; measurements are indicative and in metres. All features included in this 3D plan are for inspiration purposes only. This is not an exact replica of the property or the position of exterior elements. Plans should not be relied on. Interested parties should make and rely on their own enquiries.

11 Green Street, Tempe
stonerealestate.com.au

Produced by DIAKRIT