



15 Quinlan Parade Manly Vale, NSW

3 

1 

3 

Exceptional opportunity on a huge block

Positioned on an extensive 747sqm block within a peaceful and leafy locale is this charming solid brick home presenting an array of opportunities to renovate, extend, or knock-down and start again to realise a dream family home. Exceptionally placed, it backs onto Kings Reserve, is a short walk to express city buses, Manly Dam recreational area and a choice of primary and secondary schools. This superb offering is close to local shops and supermarkets and also just minutes to Warringah Mall shopping centre.

Price:

Contact Agent



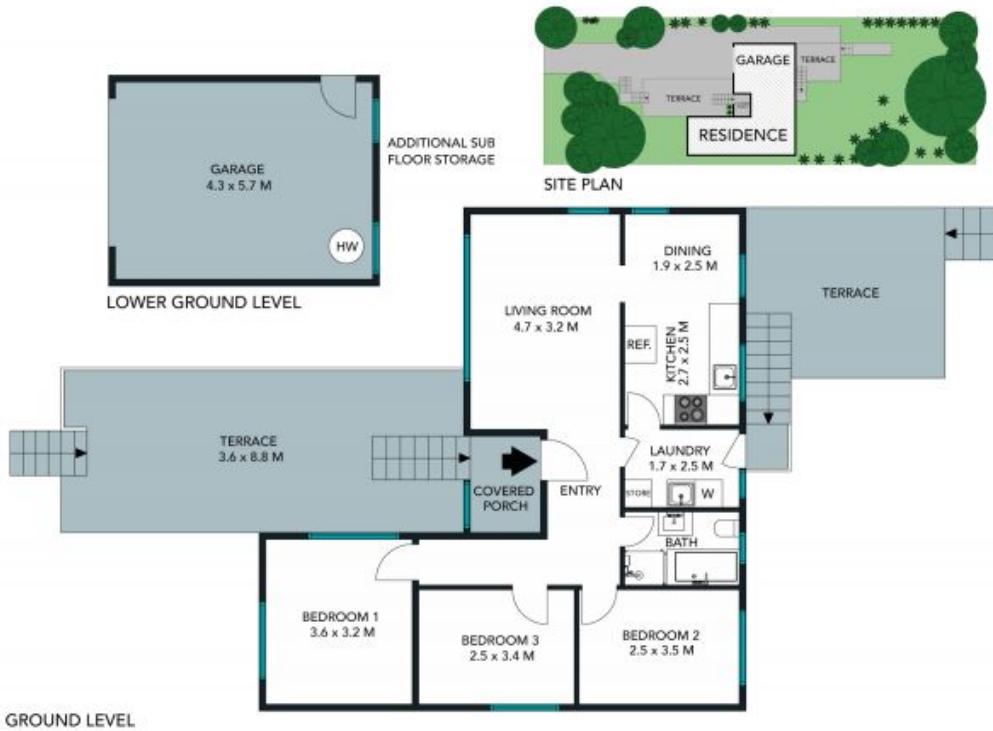
Adam Moore

0428 319 096



Mark Skeens

0401 241 381



TOTAL LAND AREA : 742 SQM

TOTAL LIVING AREA : 75 SQM

The site plan and floor plan are not to scale; measurements are indicative and in metres. Bushes and trees are placed for illustration purposes. Plans should not be relied on. Interested parties should make and rely on their own enquiries.



15 Quinlan Parade, Manly Vale
 stonerealestate.com.au

Produced by DIAKRIT



The floor plan is not to scale; measurements are indicative and in metres. All features included in this 3D plan are for inspiration purposes only. This is not an exact replica of the property or the position of exterior elements. Plans should not be relied on. Interested parties should make and rely on their own enquiries.

15 Quinlan Parade, Manly Vale
stonerealestate.com.au

Produced by DIAKRIT