



20/177 Pacific Highway Roseville, NSW



A relaxed indoor outdoor lifestyle

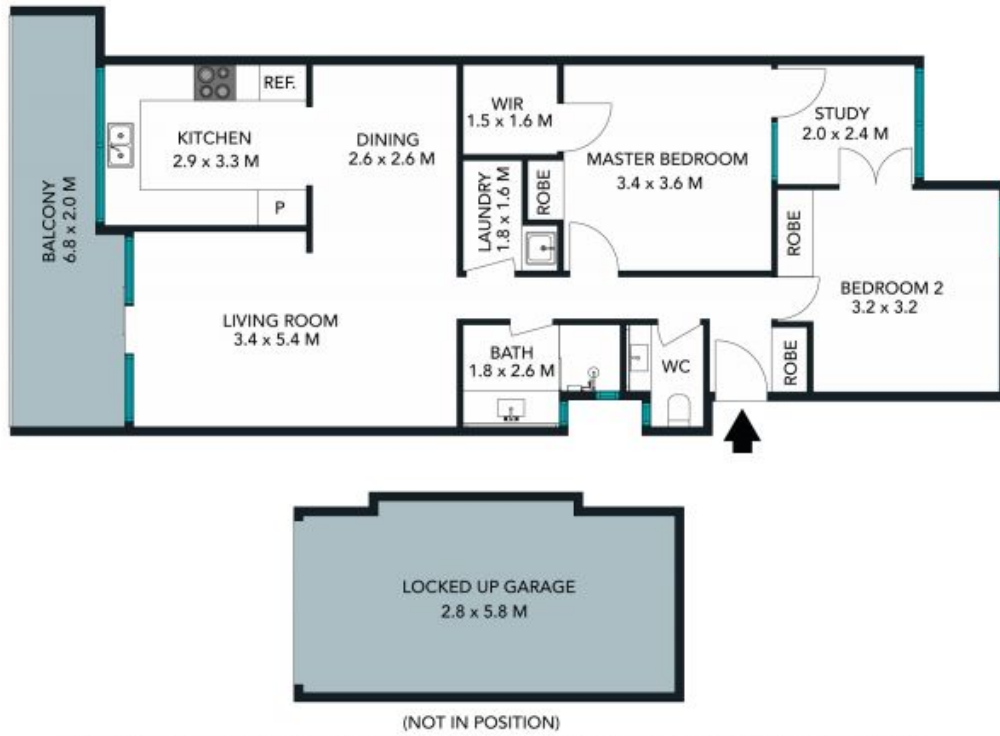
Designed for the discerning, this exclusive apartment offers luxurious living environments perfect for busy modern lifestyles. Beautifully boutique, oversized and elegantly appointed with quality finishes, its prized proportions enjoy peace and seclusion being set at the rear of the complex.

Price: Contact Agent
Council Rates: \$334.00 p/q
Water Rates: \$171.00 p/q



Andrew Braid

0404 979 597

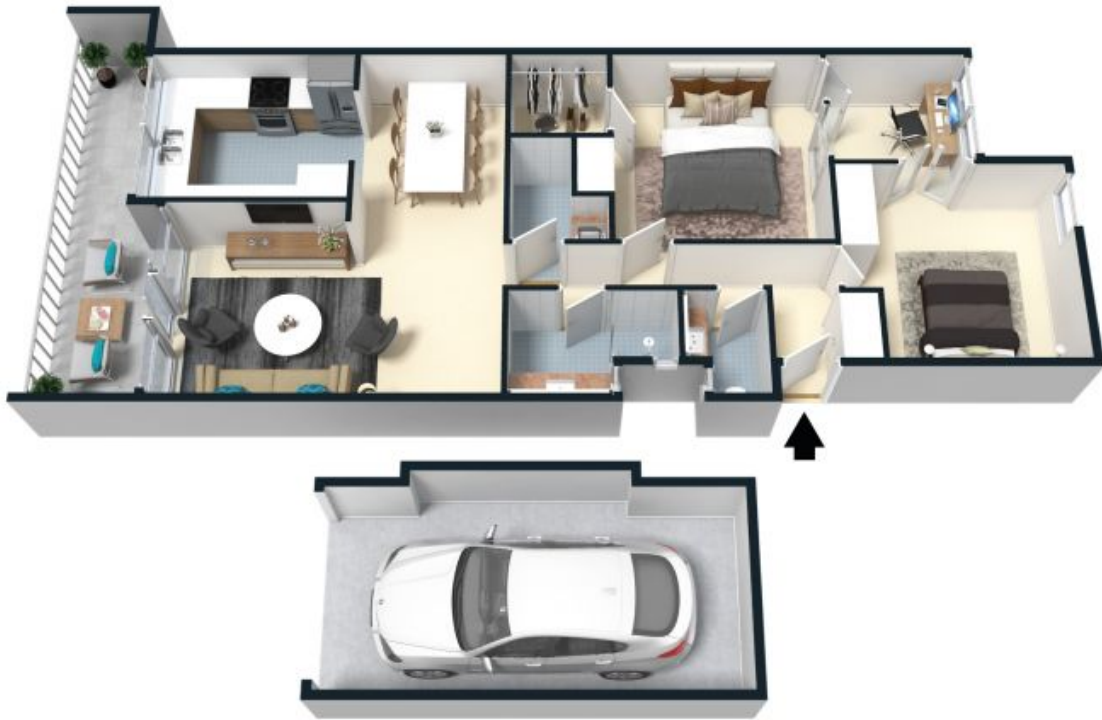


The floor plan is not to scale; measurements are indicative and in metres. Exterior elements are not in position. Plans should not be relied on. Interested parties should make and rely on their own enquiries.



20/177 Pacific Highway, Roseville
 stonerealestate.com.au

Produced by DIAKRIT



The floor plan is not to scale; measurements are indicative and in metres. All features included in this 3D plan are for inspiration purposes only. This is not an exact replica of the property or the position of exterior elements. Plans should not be relied on. Interested parties should make and rely on their own enquiries.

20/177 Pacific Highway, Roseville
stonerealestate.com.au

Produced by DIAKRIT