

13/100 Queenscliff Road Queenscliff, NSW      2      2      1

### Oversized apartment overlooking Manly Lagoon

Defined by its extraordinarily spacious interiors and expansive entertainers' terrace over looking the lagoon, this apartment is sure to impress. Placed in an immaculate building with direct access to Manly Lagoon at the rear, it is only footsteps to Manly Wharf buses only a few minutes stroll to Queenscliff or Freshwater Beach.

**Price:** LEASED  
**Bond:** \$3,800  
**Available Date:** 20/02/2019



**Zoe Thackeray**

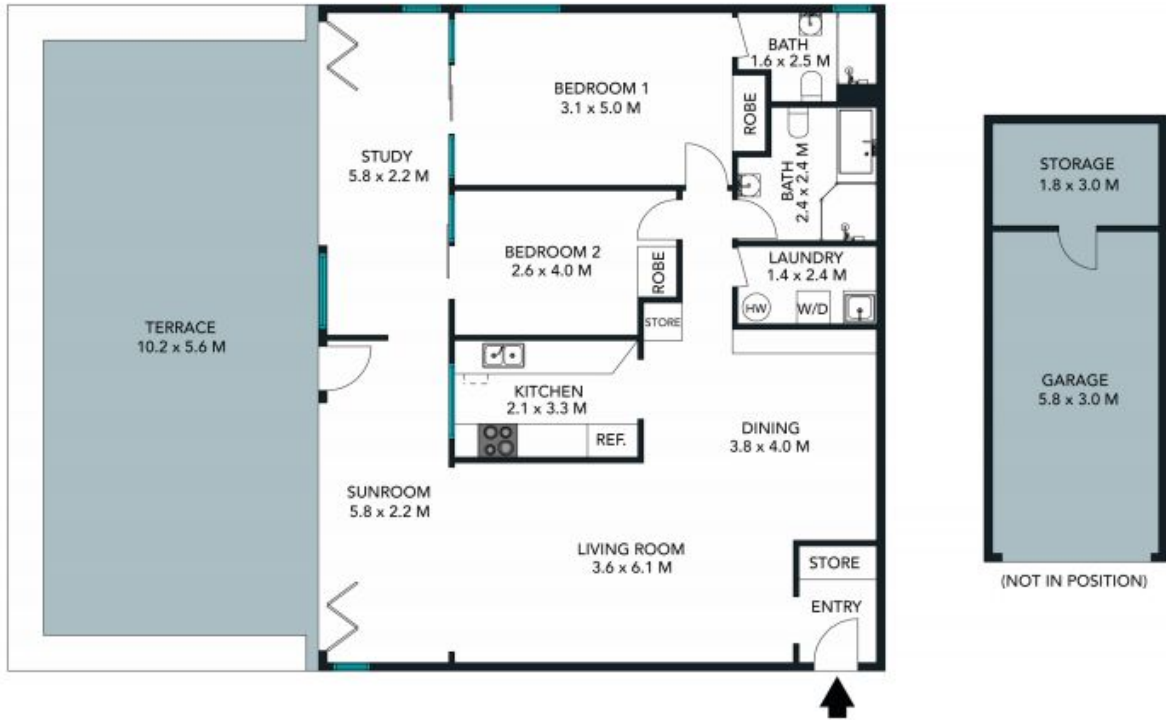
0449 167 420



The floor plan is not to scale; measurements are indicative and in metres. All features included in this 3D plan are for inspiration purposes only. This is not an exact replica of the property or the position of exterior elements. Plans should not be relied on. Interested parties should make and rely on their own enquiries.

13/100 Queenscliff Road, Queenscliff  
stonerealestate.com.au

Produced by DIAKRIT



TOTAL SQM ON TITLE : 110 SQM

The floor plan is not to scale; measurements are indicative and in metres. Exterior elements are not in position. Plans should not be relied on. Interested parties should make and rely on their own enquiries.

13/100 Queenscliff Road, Queenscliff  
 stonerealestate.com.au

Produced by DIAKRIT