

31 Lawson Street SANS SOUCI, NSW



SOLD AT AUCTION BY RAY FADEL 0413177739

Price:

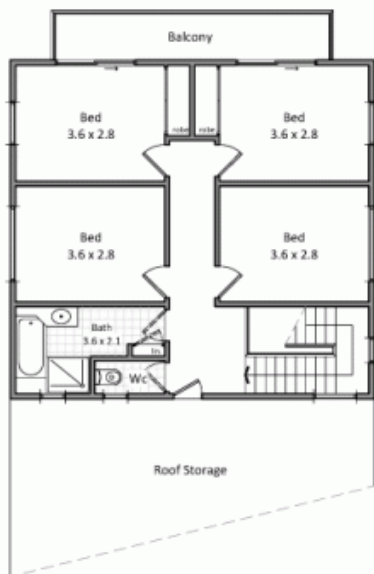
AUCTION

Set on a sizeable 746m2 parcel of land, this solid two-storey, brick veneer home is begging to be loved by a new family. Ideal for buyers who don't mind incorporating a little of their own style, it easily accommodates a large family and also offers plenty of room to run and play outside.

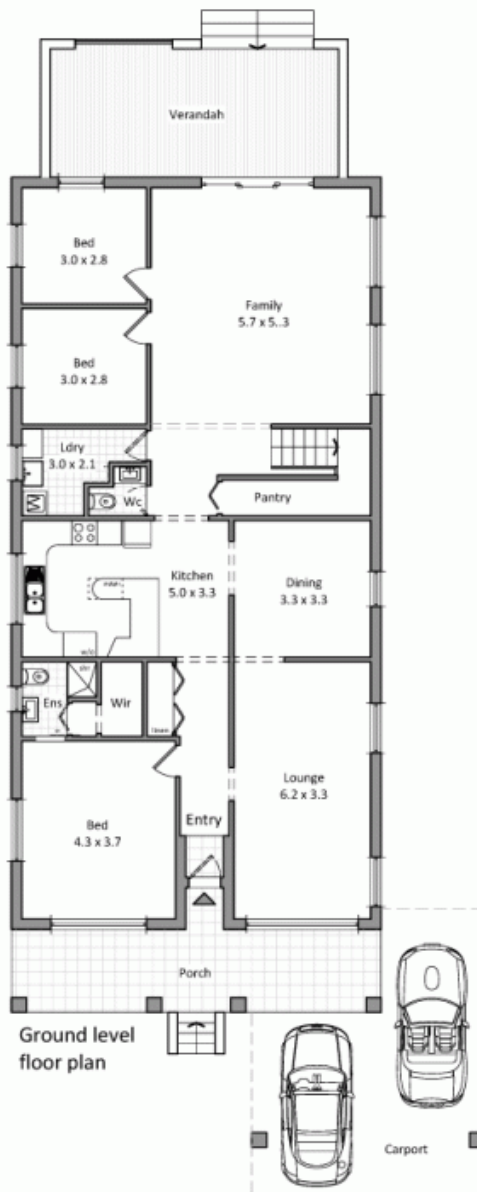


Ray Fadel

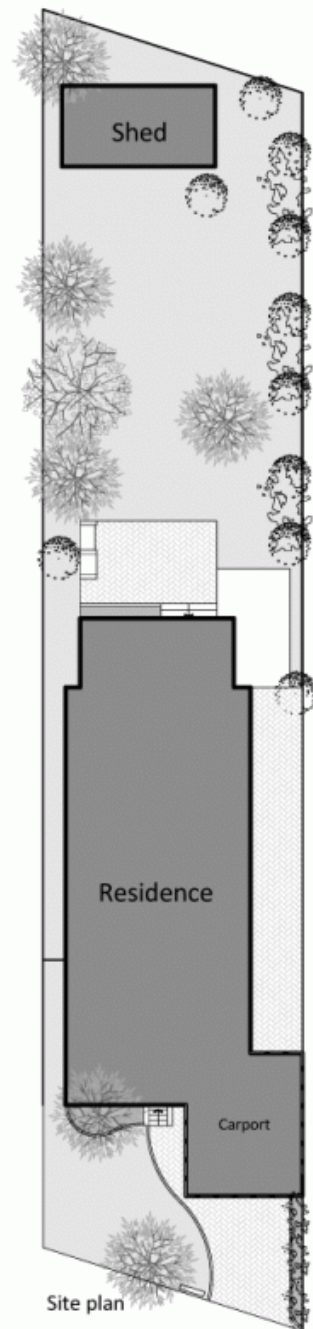
0413 177 739



First level floor plan



Ground level floor plan



Site plan

This diagram is for illustrative purpose only. All reasonable care has been taken in the preparation, but no warranty is given as to the accuracy of the information. This document does not constitute any part of any offer or contract. Dimensions shown are approximate only. Prospective purchasers must rely on their own enquiries. Floor plan by Igor Nedic 0410581805/spinpix.com.au.

31 Lawson Street, Sans Souci

