

30 Terrace Road Killara, NSW



Idyllic retreat in beautiful national park setting

Set on 1,252sqm (approx) in a peaceful child-friendly enclave backing onto Lane Cove National Park, this gorgeous home has been stylishly renovated with nothing to do but relax and enjoy the magnificent views. A flexible floorplan of modern interiors, tranquil outdoor entertaining with pool and an unbeatable location a stroll to all amenities create a perfect backdrop for family living.

Price:

Contact Agent



Steven Kourdis

0402 555 675



Ryan Woo

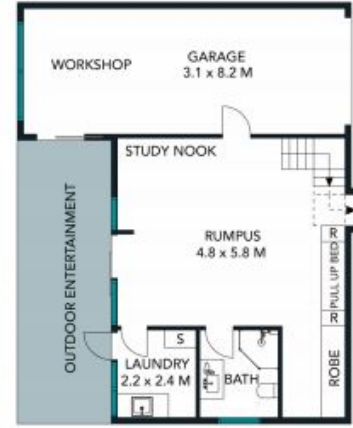
0410 884 680



SITE PLAN



FIRST FLOOR



GROUND FLOOR

The site plan and floor plan are not to scale; measurements are indicative and in metres. Bushes and trees are placed for illustration purposes. Plans should not be relied on. Interested parties should make and rely on their own enquiries.





FIRST FLOOR



GROUND FLOOR

The floor plan is not to scale; measurements are indicative and in metres. All features included in this 3D plan are for inspiration purposes only. This is not an exact replica of the property or the position of exterior elements. Plans should not be relied on. Interested parties should make and rely on their own enquiries.



30 Terrace Road, Killara
stonerealestate.com.au

Produced by DIAKRIT