



3 Sherwood Place Shellharbour, NSW

3 2 2

Suburban living and seaside access combined

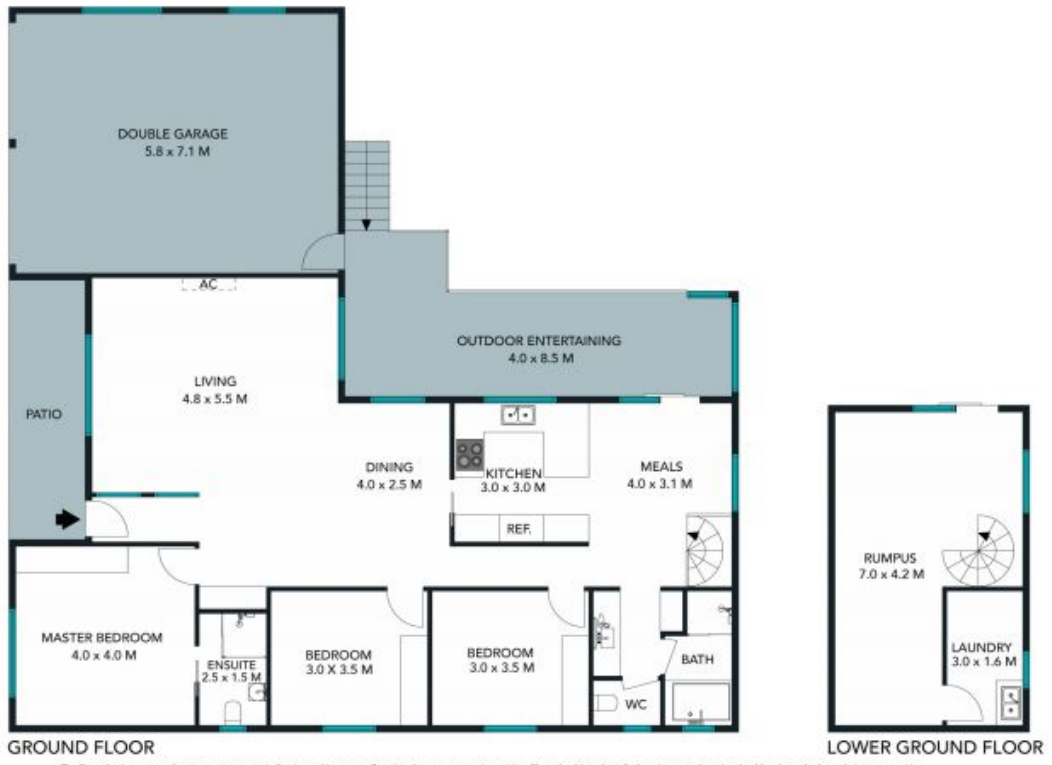
This picturesque home is not only in the perfect location, positioned in a family friendly quiet cul-de-sac, it's also lovingly presented and ready to move in. Only a short stroll to stunning beaches, restaurants, schools and coffee shops.

Price: \$681,000



Neil Webster

0439 028 748



The floor plan is not to scale; measurements are indicative and in metres. Exterior elements are not in position. Plans should not be relied on. Interested parties should make and rely on their own enquiries.





GROUND FLOOR



LOWER GROUND FLOOR 

The floor plan is not to scale; measurements are indicative and in metres. All features included in this 3D plan are for inspiration purposes only. This is not an exact replica of the property or the position of exterior elements. Plans should not be relied on. Interested parties should make and rely on their own enquiries.

3 Sherwood Place, Shellharbour
stonerealestate.com.au

Produced by **DIAKRIT**