



12/49 Campbell Parade Manly Vale, NSW



Beautifully presented spacious apartment

Beautifully presented and with natural light throughout, this spacious ground floor apartment provides an ideal coastal sanctuary whilst being conveniently positioned for city commuters. It enjoys level access from the street, offering a well designed layout and nestled in a solid double brick building, a short stroll to Passmore Reserve, close to B-Line city buses, within walking distance to Warringah Mall and close to beaches.

Price: HOLDING DEPOSIT TAKEN

Available Date: 15/04/2019



Zoe Thackeray

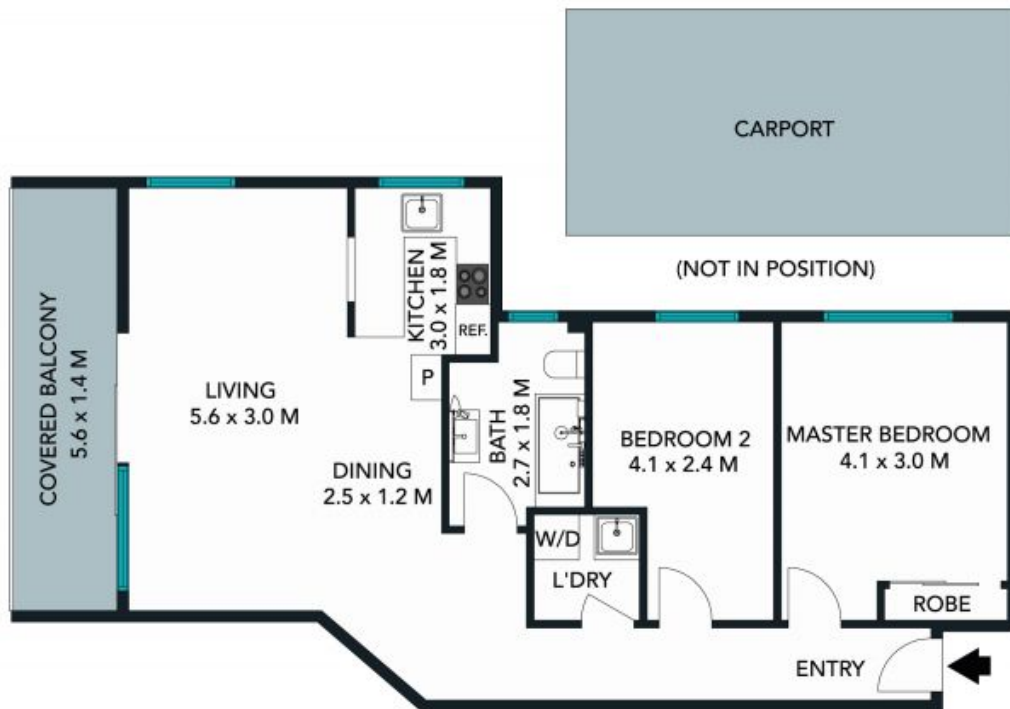
0449 167 420



The floor plan is not to scale; measurements are indicative and in metres. All features included in this 3D plan are for inspiration purposes only. This is not an exact replica of the property or the position of exterior elements. Plans should not be relied on. Interested parties should make and rely on their own enquiries.

12/45-49 Campbell Parade, Manly Vale
stonerealestate.com.au

Produced by DIAKRIT



TOTAL SQM ON TITLE : 100 SQM The site plan and floor plan are not to scale; measurements are indicative and in metres. Balues and trees are placed for illustration purposes. Plans should not be relied on. Interested parties should make and rely on their own enquiries.

12/45-49 Campbell Parade, Manly Vale
 stonerealestate.com.au

Produced by DIAKRIT